

# EVIDENCING THE EXPOSURE AND ADOPTION OF REGREENING INITIATIVES AND LESSONS LEARNED



## OBJECTIVE & APPROACH

### The objectives

- Assess project's progress towards intended objectives (HHs and hectareage attained)
- Derive lessons and best practices for future restoration projects
- Estimate project impact on various environmental and socio-economic outcomes

### Phase-in impact evaluation design

Beneficiaries enrolment

YEAR 1  
(Treatment)

YEAR 4  
(Comparison)

### Overall impact assessment approach

Land health assessment

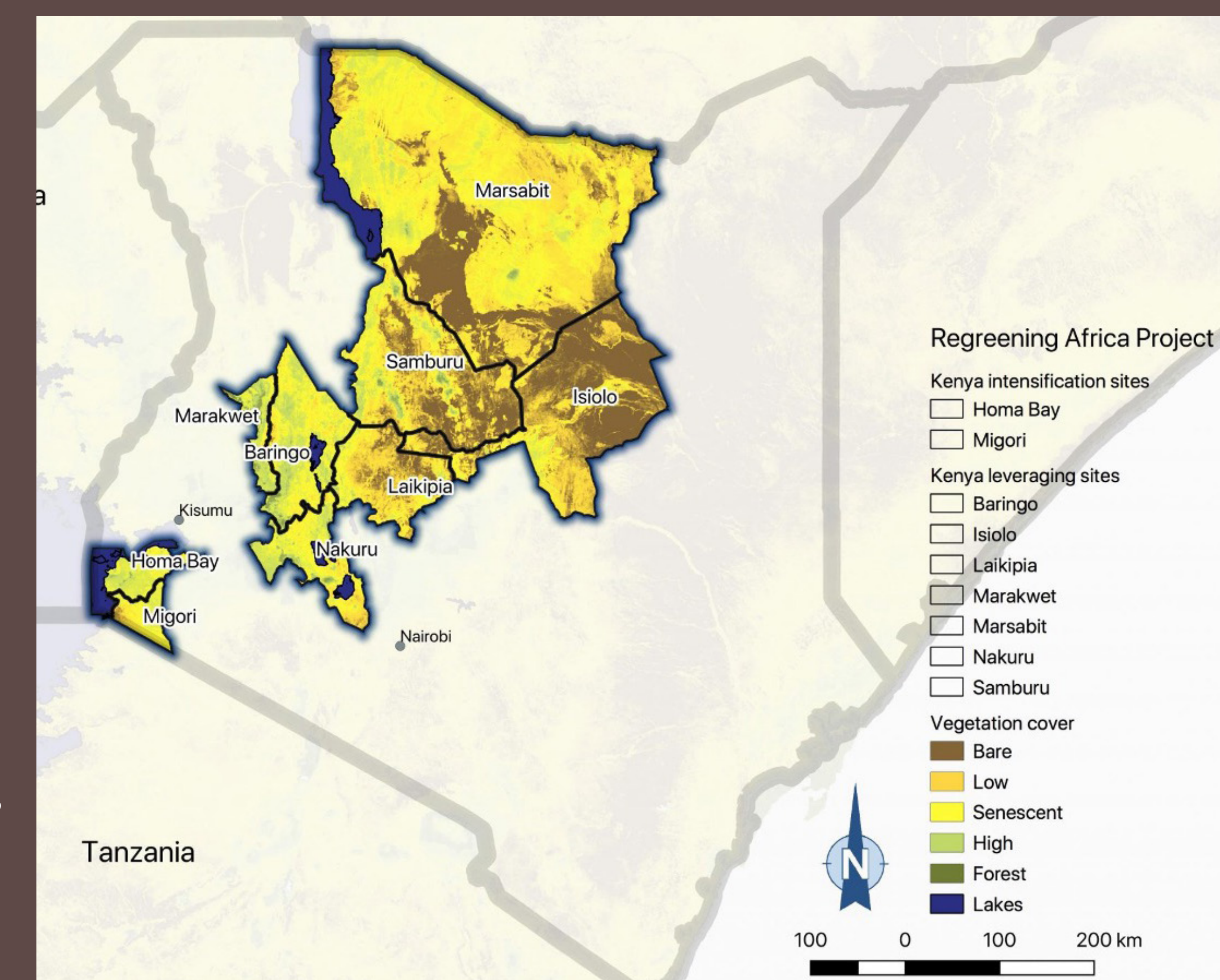
Ex-ante modelling of long-term impacts

before/after and with/without analysis

Direct Impact Evaluation Design

- Household survey - similar to baseline  
Targeted: 984 baseline households
- 846 HHs surveyed  
(13% attrition – 132 households could not be reached at endline)
- Village level surveys  
58 villages selected randomly – from all sublocations
- Key informant interviews  
9 key informants

## Data



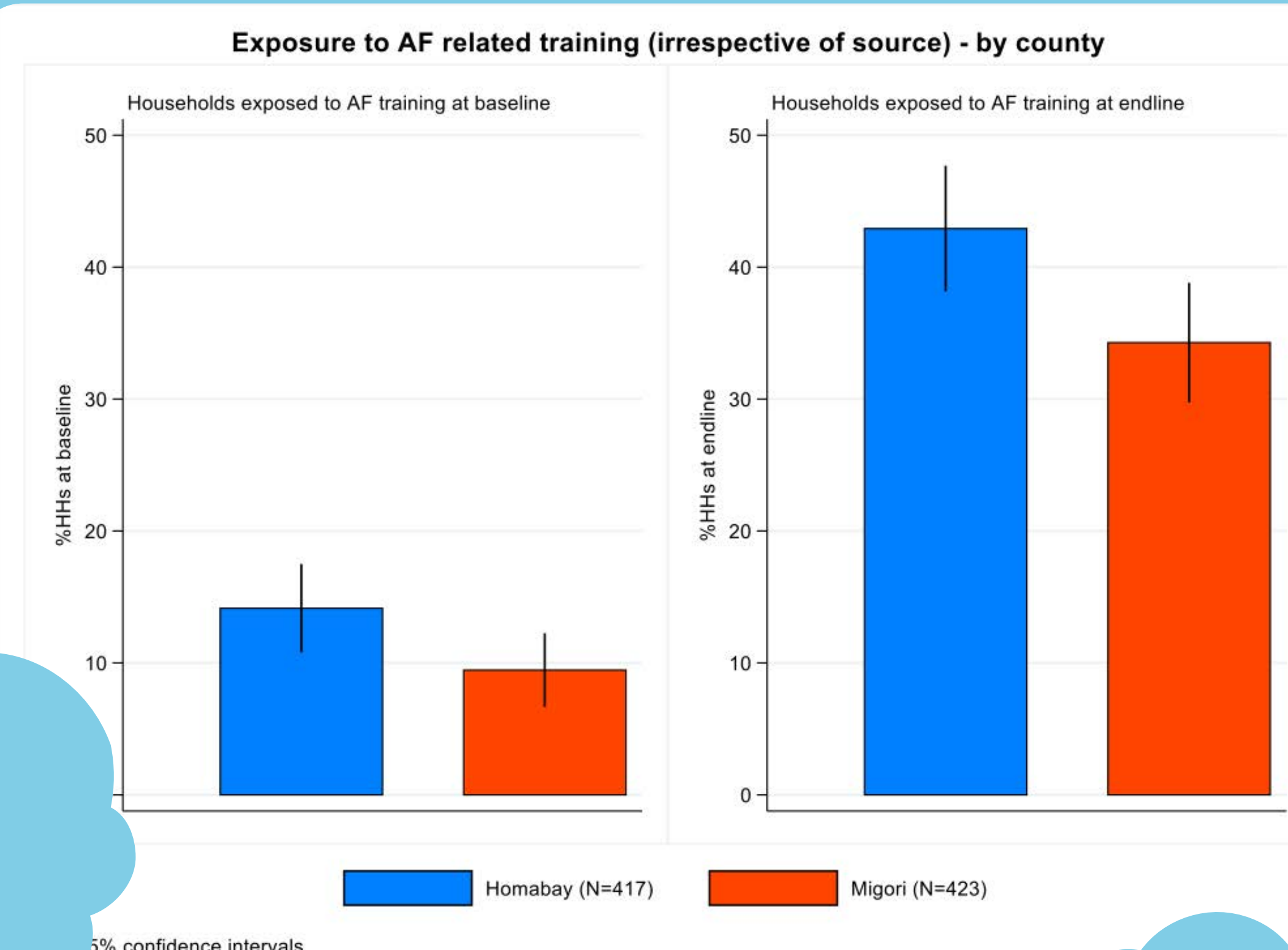
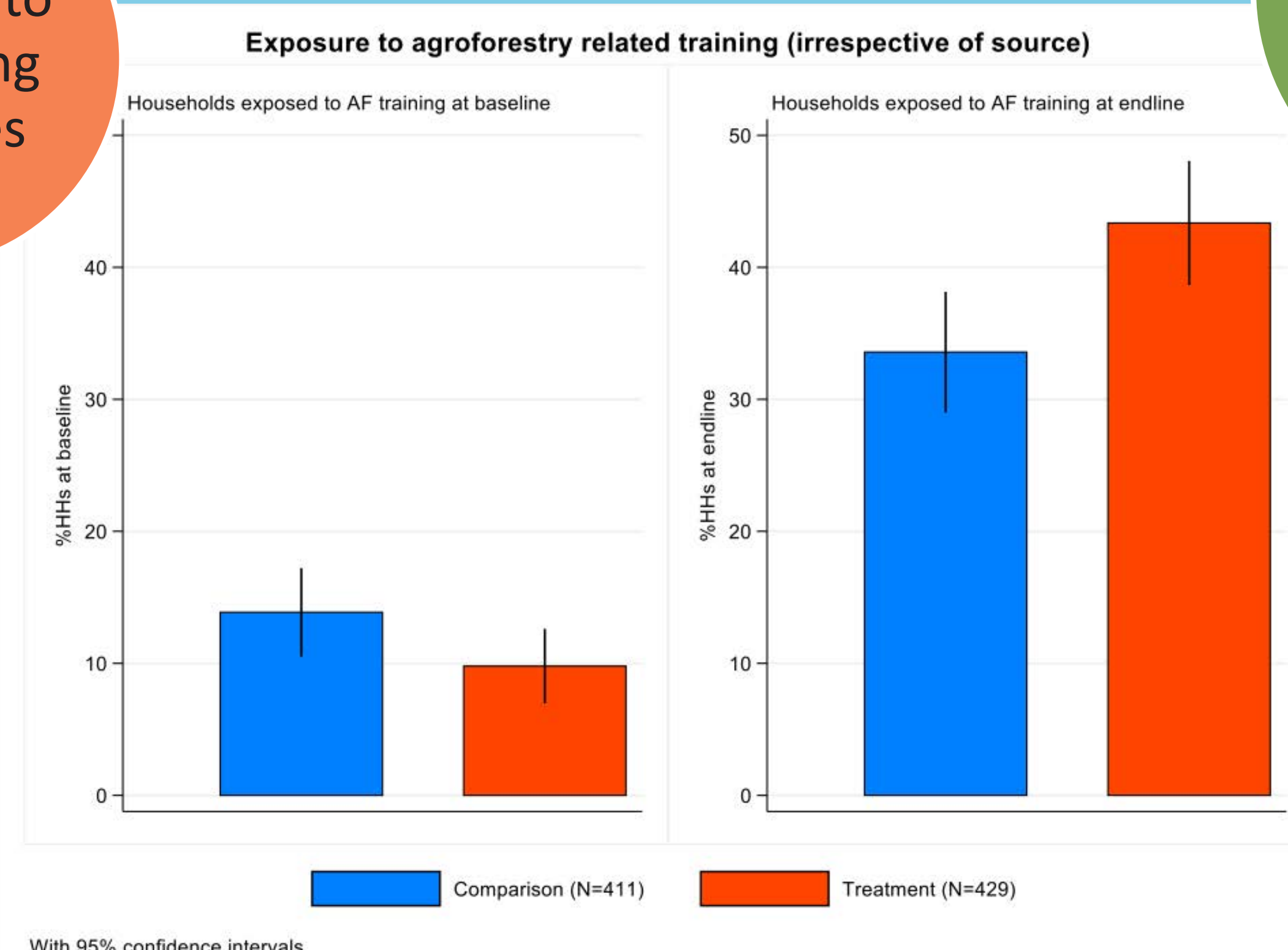


# EVIDENCING THE EXPOSURE AND ADOPTION OF REGREENING INITIATIVES AND LESSONS LEARNED

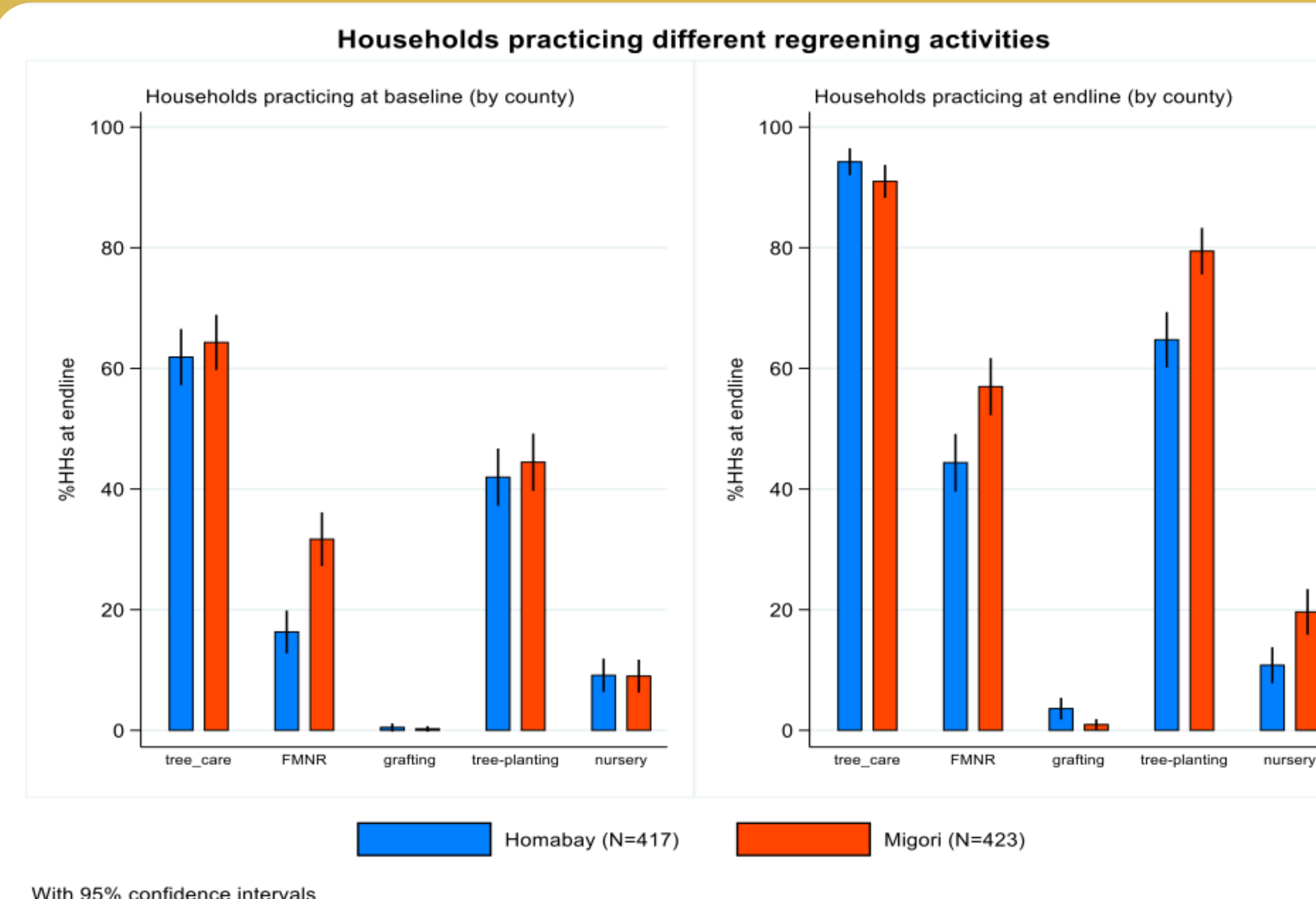
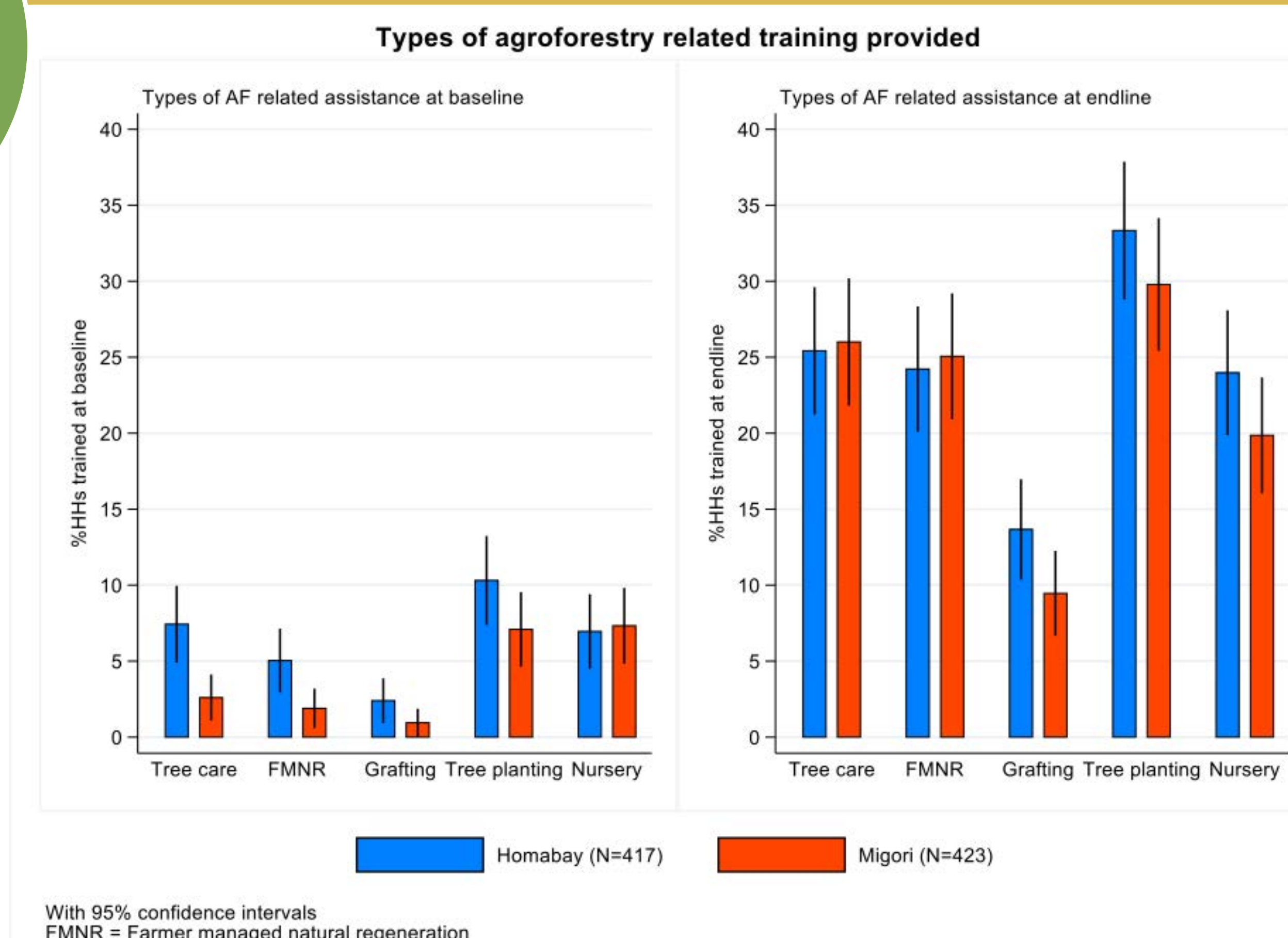
## KEY RESULTS AND DISCUSSION

- Some improvement in percentage of households exposed to regreening activities/practices irrespective of source.
- Exposure in both treatment and comparison sites.
- From 10% to 43% in treatment sites and 14% to 34% in comparison sites.

### Exposure to regreening initiatives



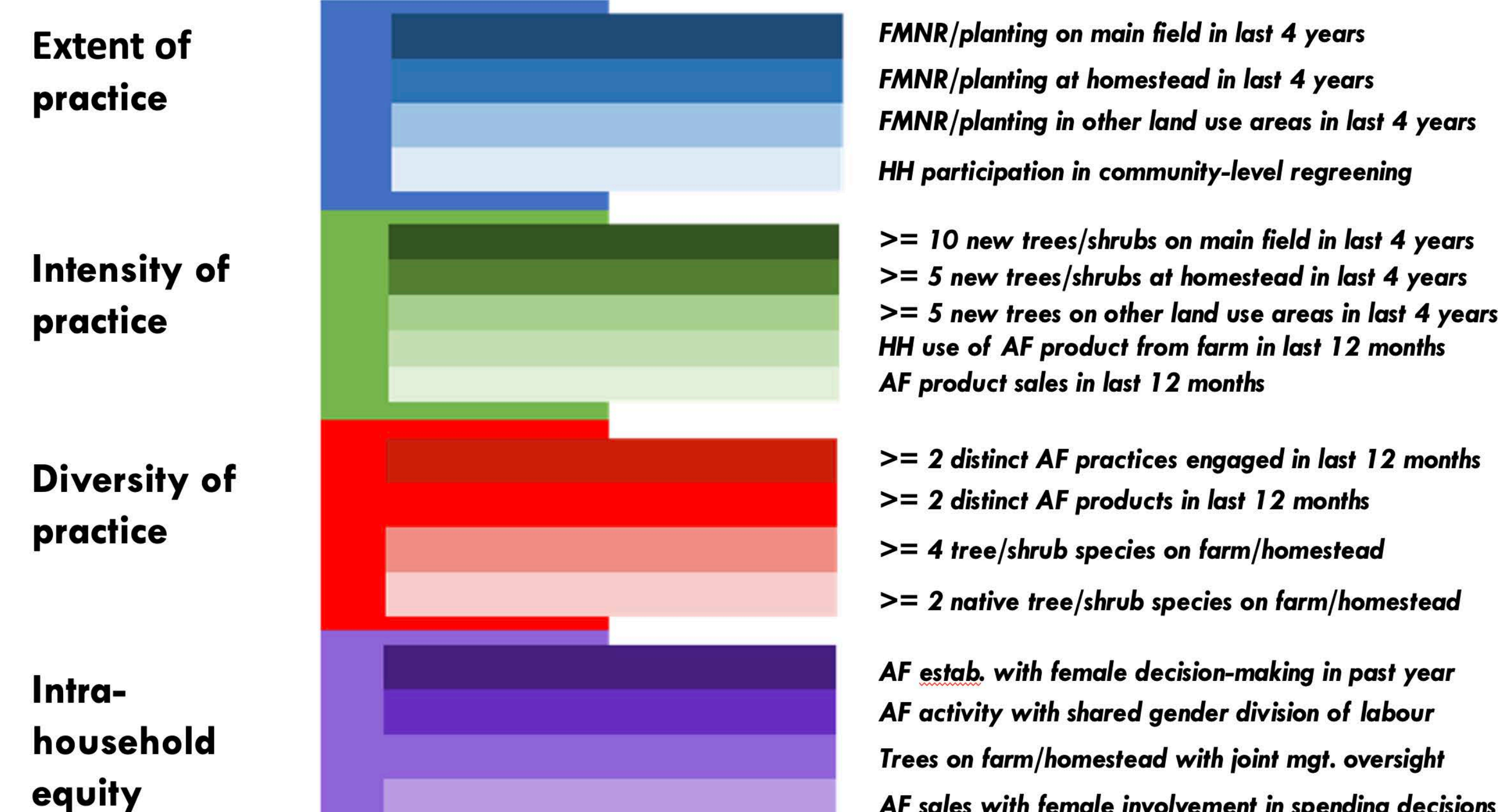
### Uptake of regreening & restoration actions





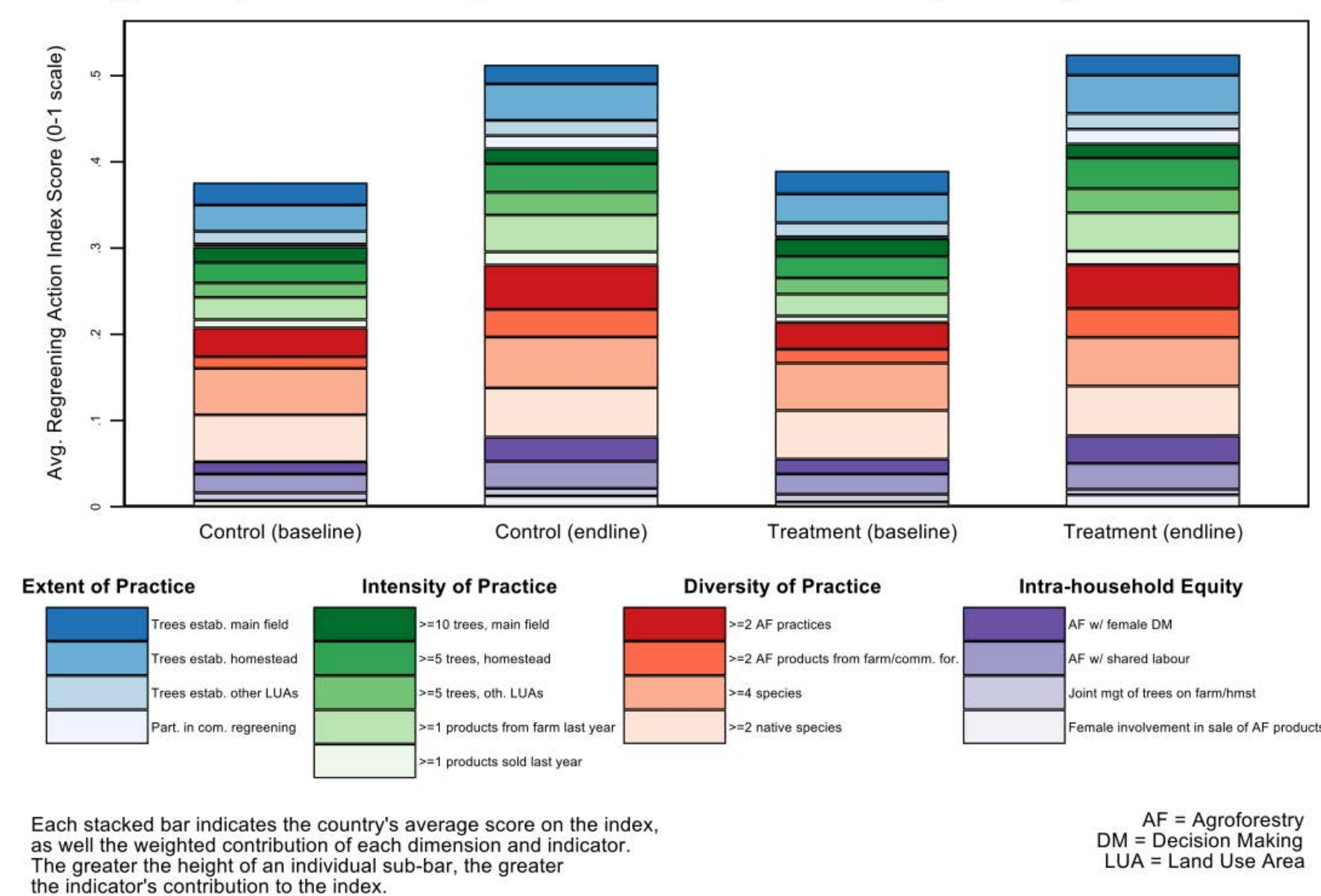
# EVIDENCING THE EXPOSURE AND ADOPTION OF REGREENING INITIATIVES AND LESSONS LEARNED

## Intensity and extent of uptake using the Regreening Action Index



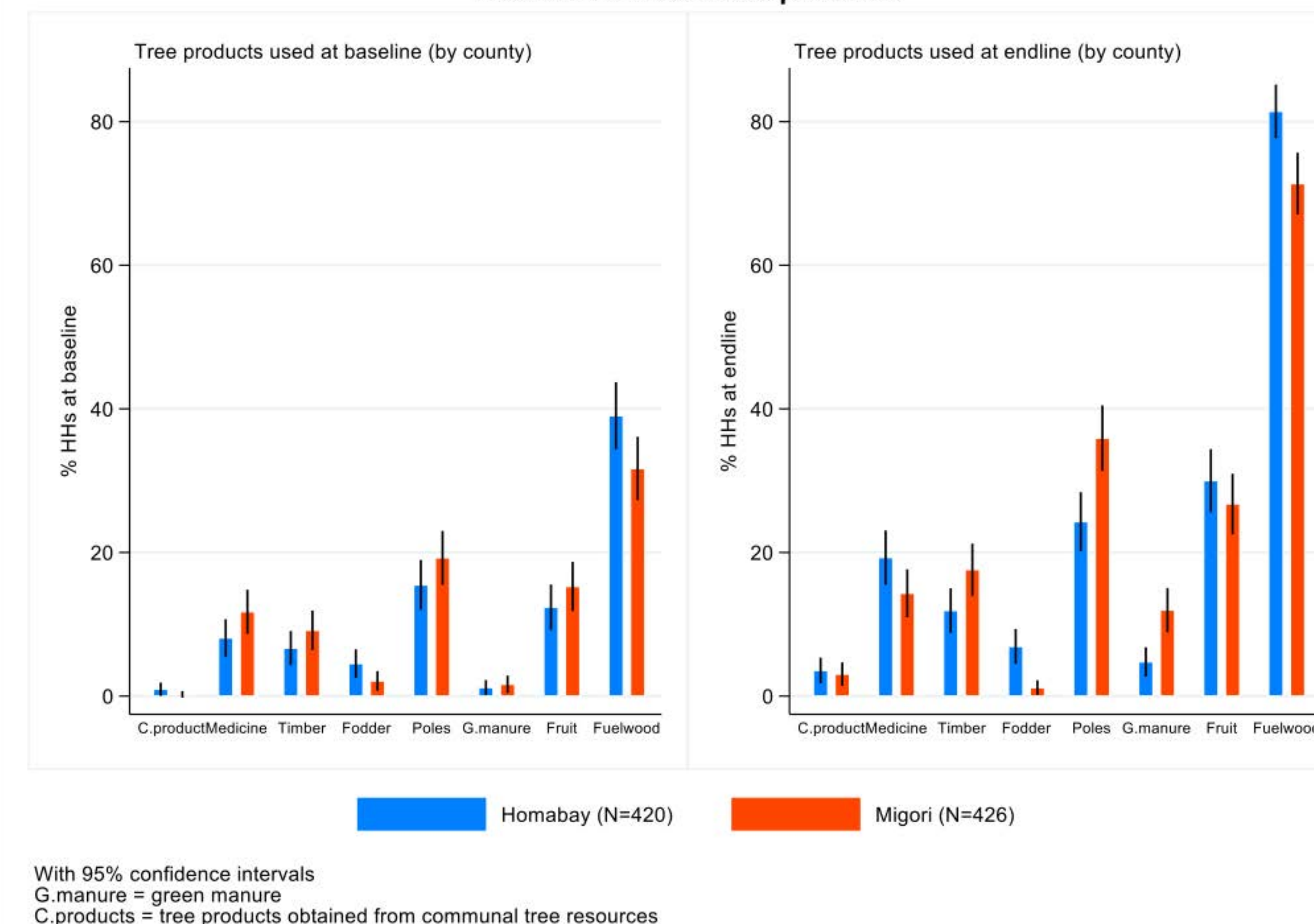
Improvement in the overall Regreening Action index  
From 0.38 to 0.52

Regreening Action Index, baseline and endline surveys - Kenya



Increase in percentage of households accessing different tree products

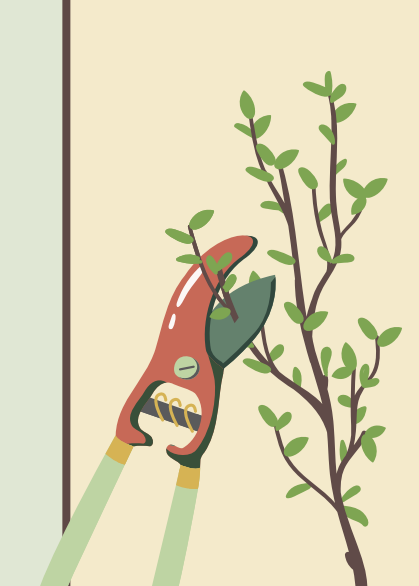
Household use of tree products



## CONCLUSION AND OUTLOOK



**Exposure** was considerably increased, and more farmers are **engaged in land restoration practices** compared to the baseline



Low level of adoption, e.g., **Nursery and grafting** which requires review the current scaling model for future engagements



**Modeling** of expected longer-term gains in **total farm income** for farmers is underway as well as triangulation and enriching the results through **remote sensing**