

THE ABCD APPROACH

The Asset-Based Community Driven (ABCD) development approach has been promoted across Kenya and has proven successful. This approach encourages communities and individuals to identify their current assets and to assess how their current assets can best be used to improve their lives and livelihoods.

The ABCD approach is based on three principles:



Everyone has gifts



Relationships build a community



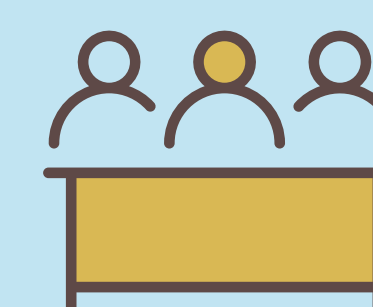
Start with what you have



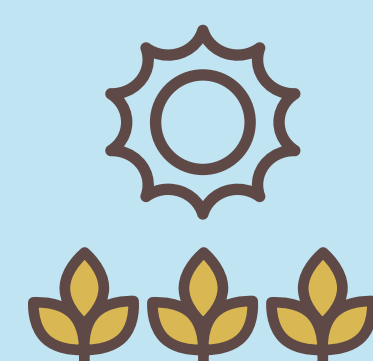
Common assets include:



Knowledge, skills and talents (human assets)



Community associations and formal organizations and institutions (social assets)



Natural resources that support livelihood activities (natural assets)



Existing infrastructure and household possessions (physical assets)



Resources that circulate in the local economy (financial assets)

The Progress:

- The ABCD team has worked with 30 community groups in Homa Bay County to co-develop asset and strength-based individual and community action plans, thereby demonstrating the effectiveness of their approach within Regreening Africa.
- The ABCD team further supported the efforts of Regreening Africa by producing an ABCD training manual and video.
 - The video follows members of the wider Nyamaji community in Homa Bay County as they apply the approach and begin implementing new activities in their households and communities.
- Drawing on the ABCD training manual, the ABCD team developed guidelines for sustainable transition planning.

ABCD is an approach, a process, that really focuses on the assets that the people within a community have."

Lang'at Kipkorir, Senior ABCD Field Staff

