

EVIDENCING THE EXPOSURE AND ADOPTION OF REGREENING INITIATIVES AND LESSONS LEARNED

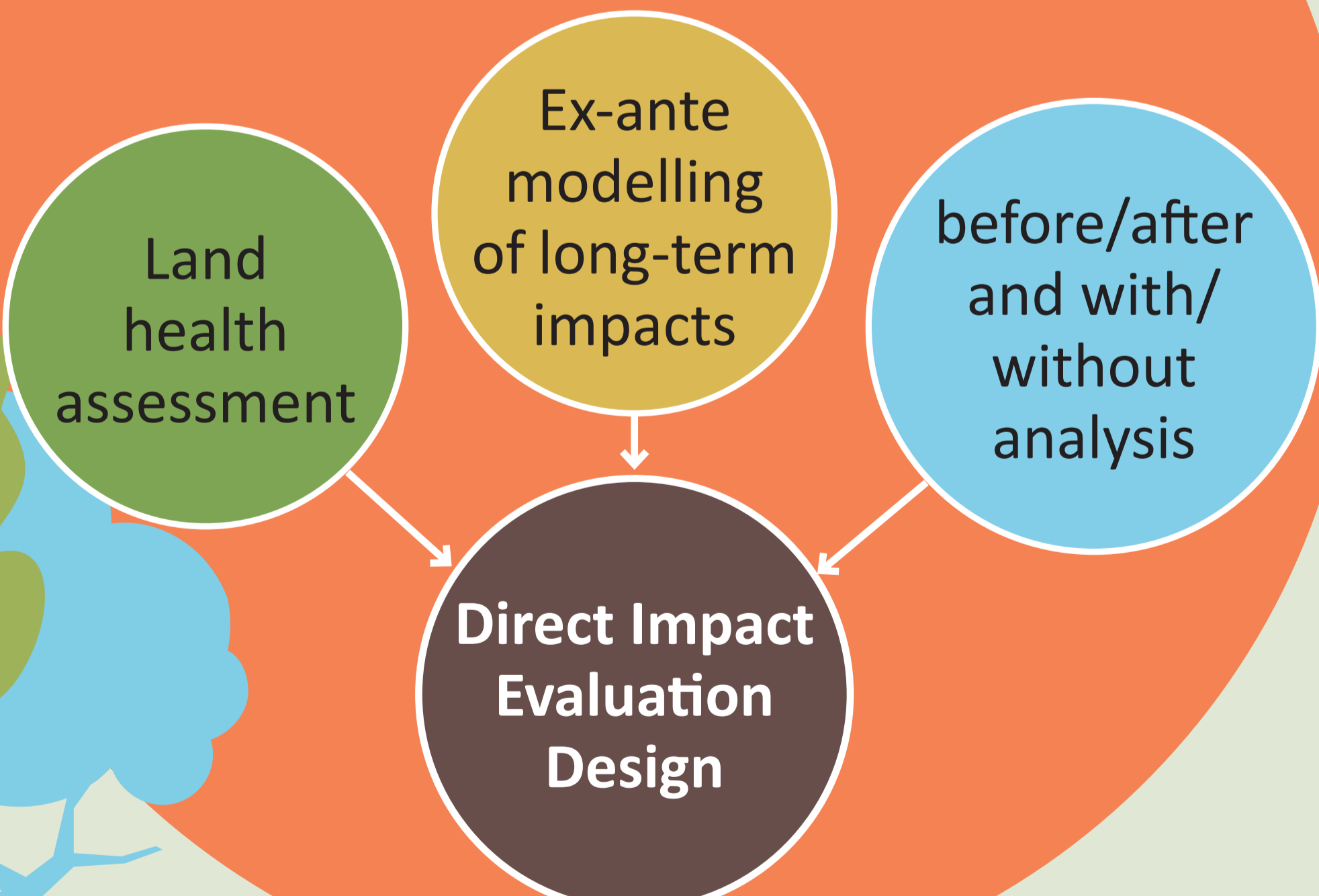


OBJECTIVE & APPROACH

The objectives

- Assess program's progress towards its intended objectives
- Estimate program's impact on various environmental and socio-economic outcomes
- Drive lessons for future restoration projects

Overall impact assessment approach



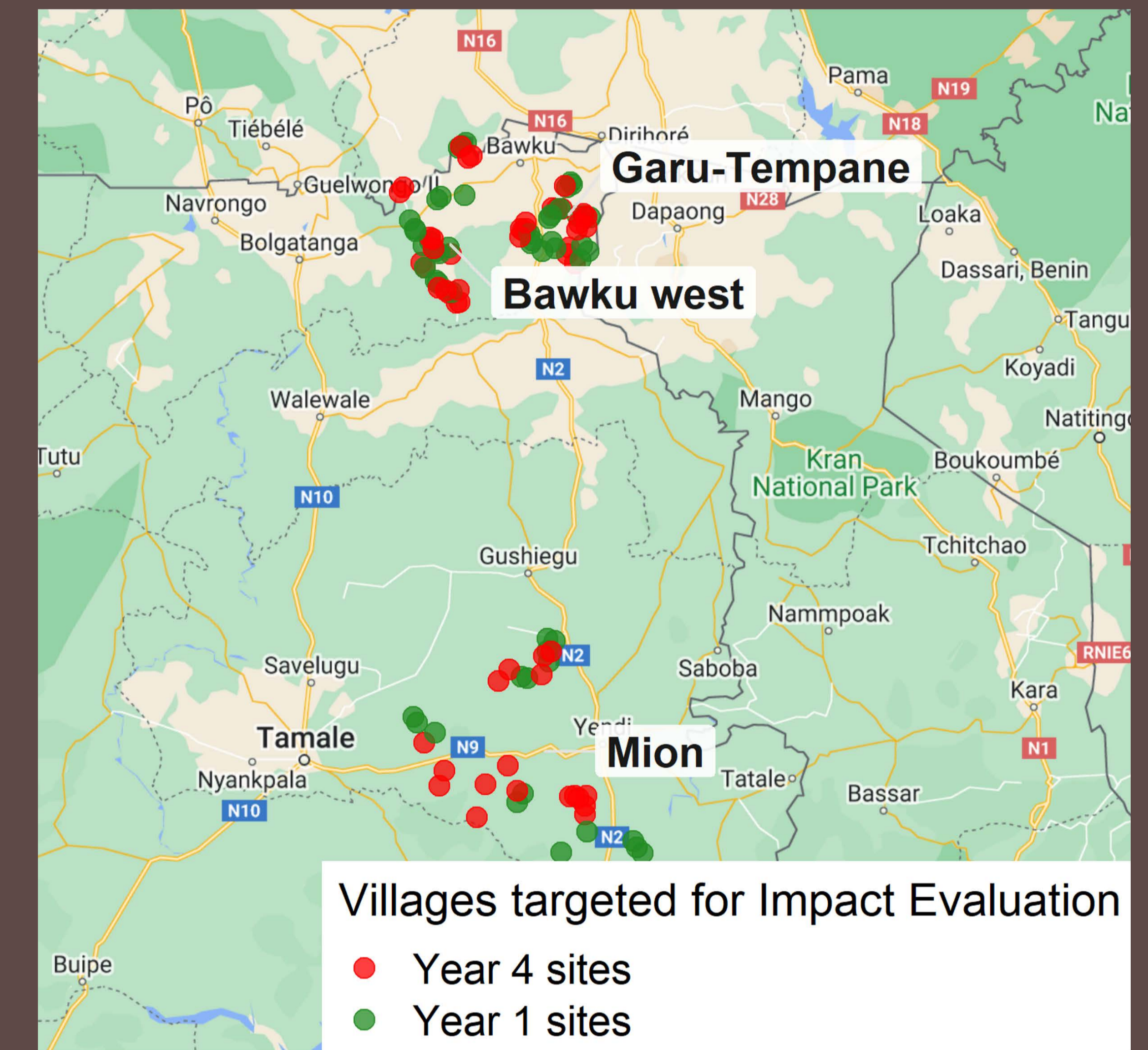
Phase-in impact evaluation design

Beneficiaries enrolment

YEAR 1 (Treatment)

YEAR 4 (Comparison)

Data



- Household surveys (1225 HHs from the three districts) - 4% attrition
- Geo tagged field polygons
- Village level KII (102) and
- Individual expert KII (16)

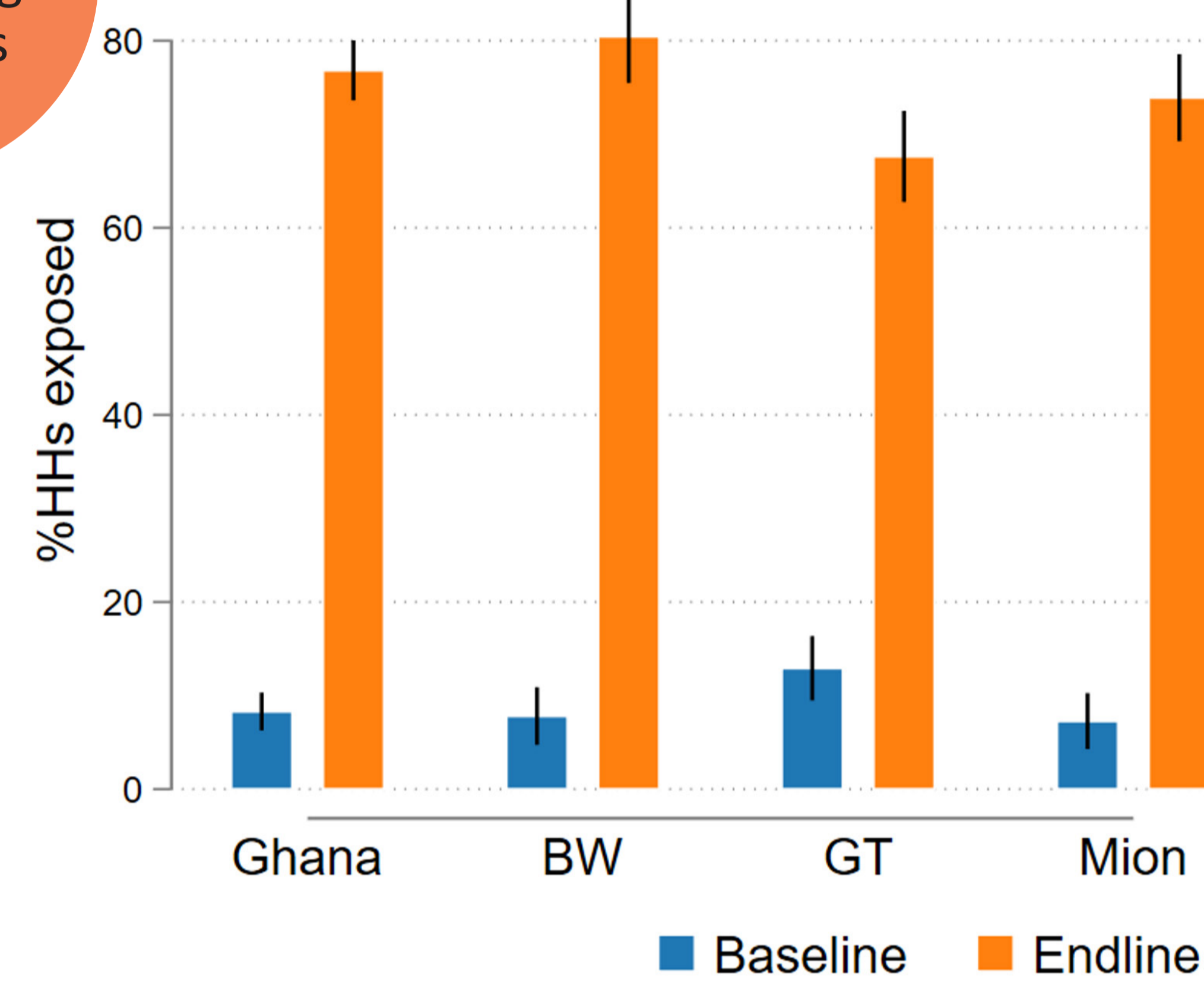


EVIDENCING THE EXPOSURE AND ADOPTION OF REGREENING INITIATIVES AND LESSONS LEARNED

KEY RESULTS AND DISCUSSION

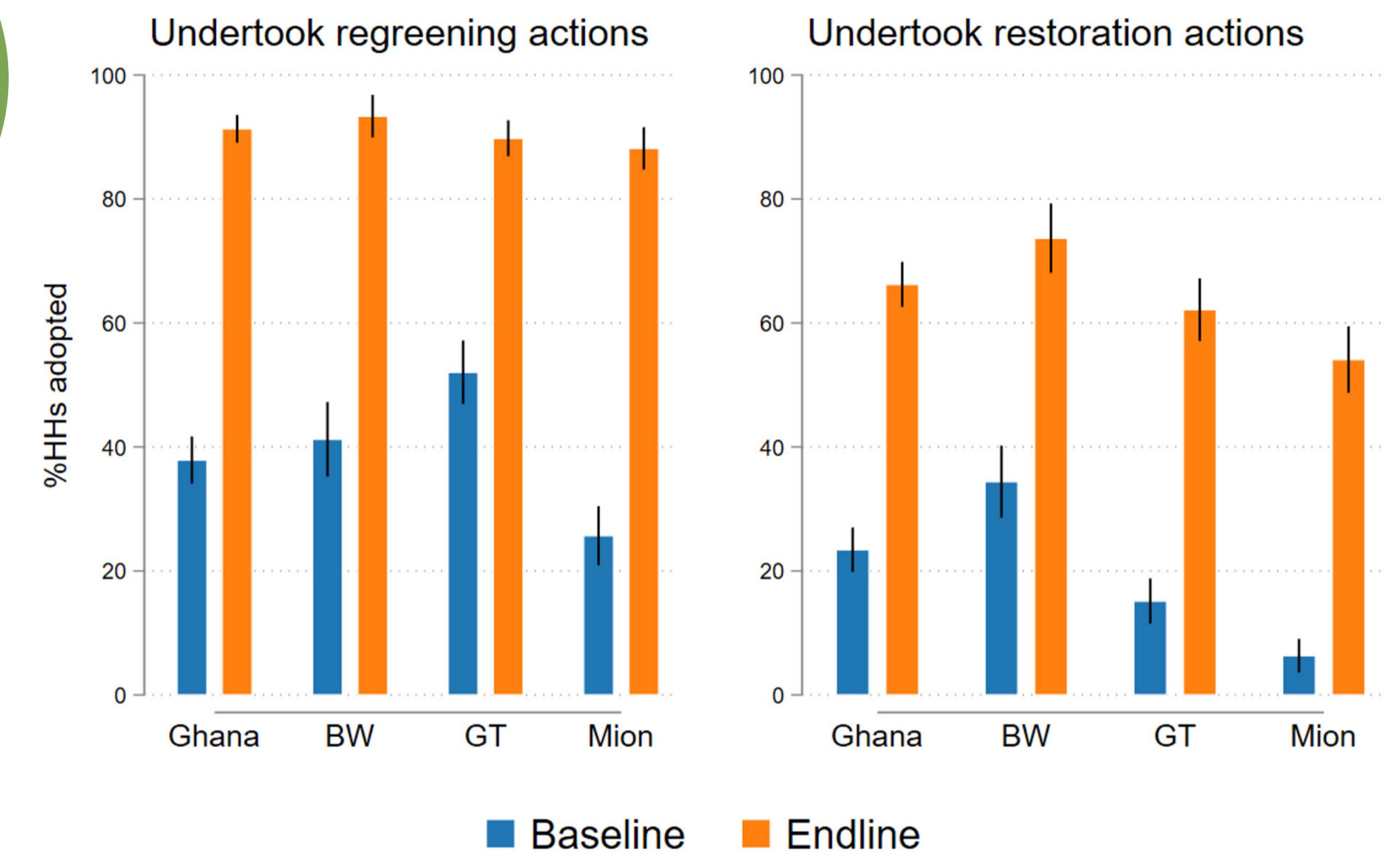
- Overall HHs exposure to Regreening initiatives significantly increased - 69% overall, 72% Bawku-West, 55% Garu-Tampane & 67% in Mion.
- The uptake of Regreening actions also increased by 53% relative to the baseline, and restoration actions by 43%.
- Tree planting, FMNR and Care & Management of existing trees widely practiced.
- Low level of adoption for nursery and tree grafting, but some positive change at endline.

Exposure to regreening initiatives

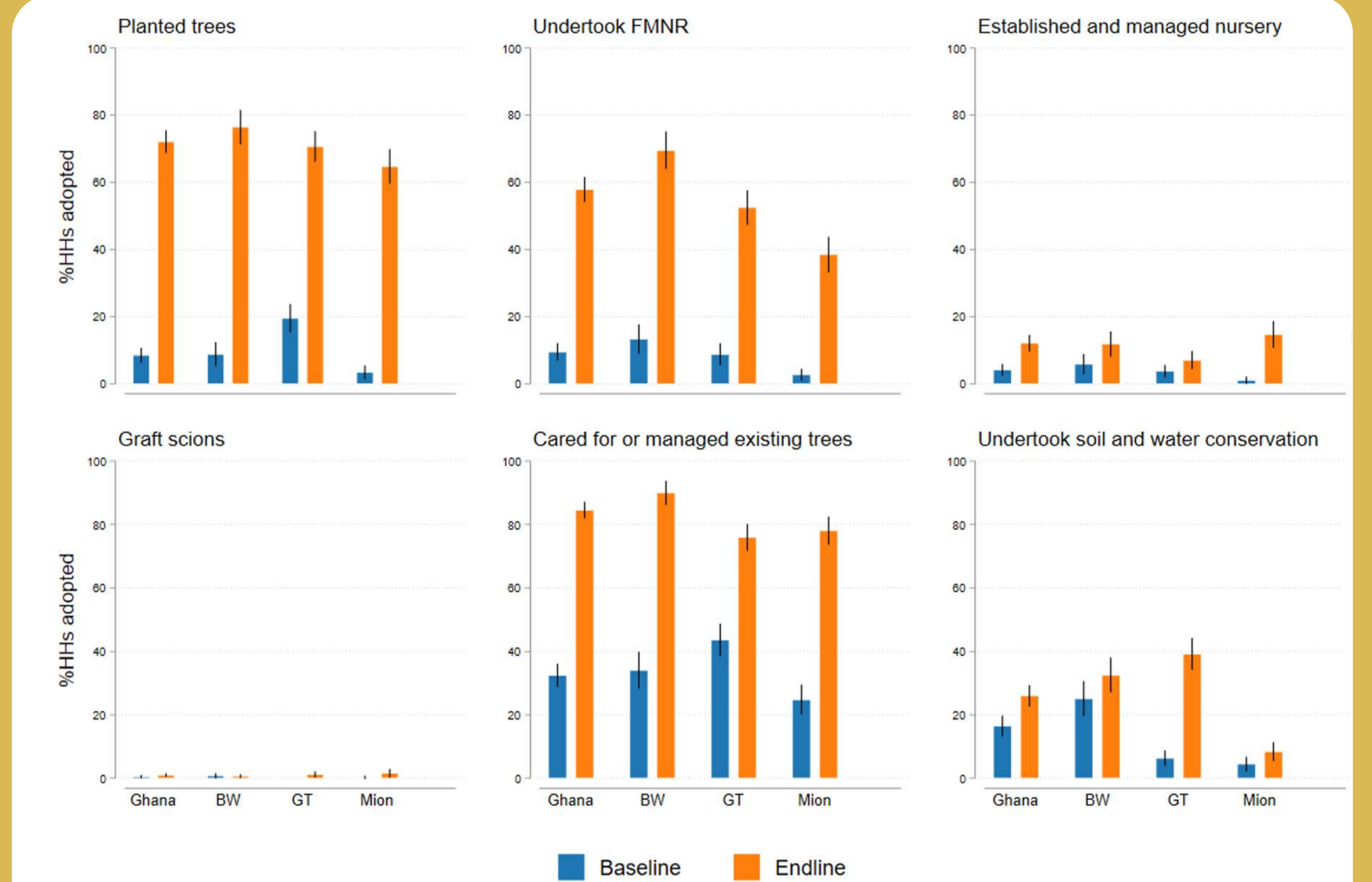


with 95% confident intervals
sampling weights used to account for differences in population sizes among surveyed village clusters
Sample size: Bawku-West (n=394), Garu-Tampane (416), Mion (415)

Uptake of regreening & restoration actions



with 95% confidence intervals
sampling weights used to account for differences in population sizes among surveyed village clusters
Sample size: Bawku-West (n=394), Garu-Tampane (416), Mion (415)

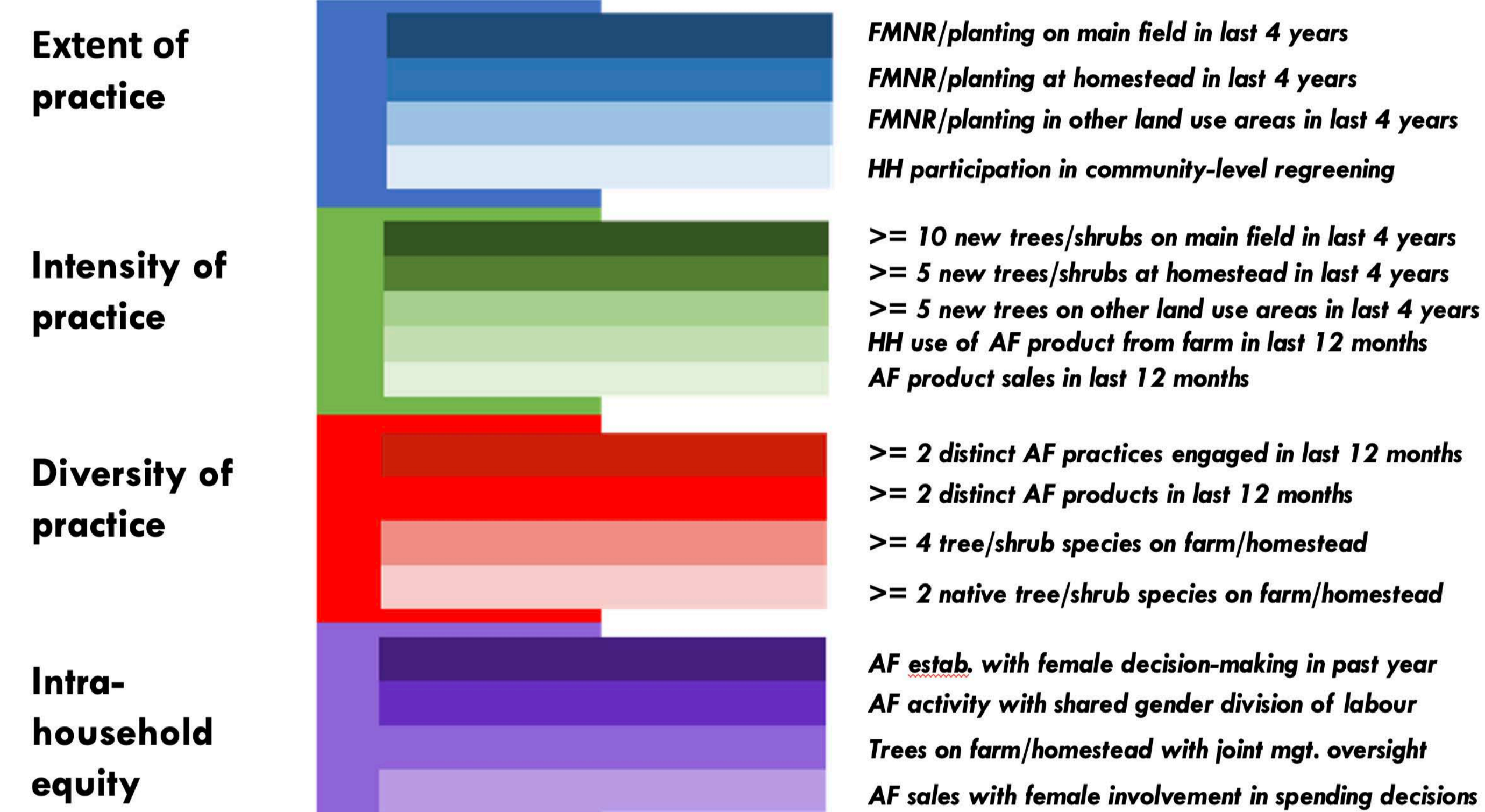


with 95% confidence intervals
sampling weights used to account for differences in population sizes among surveyed village clusters
Sample size: Bawku-West (n=394), Garu-Tampane (416), Mion (415)



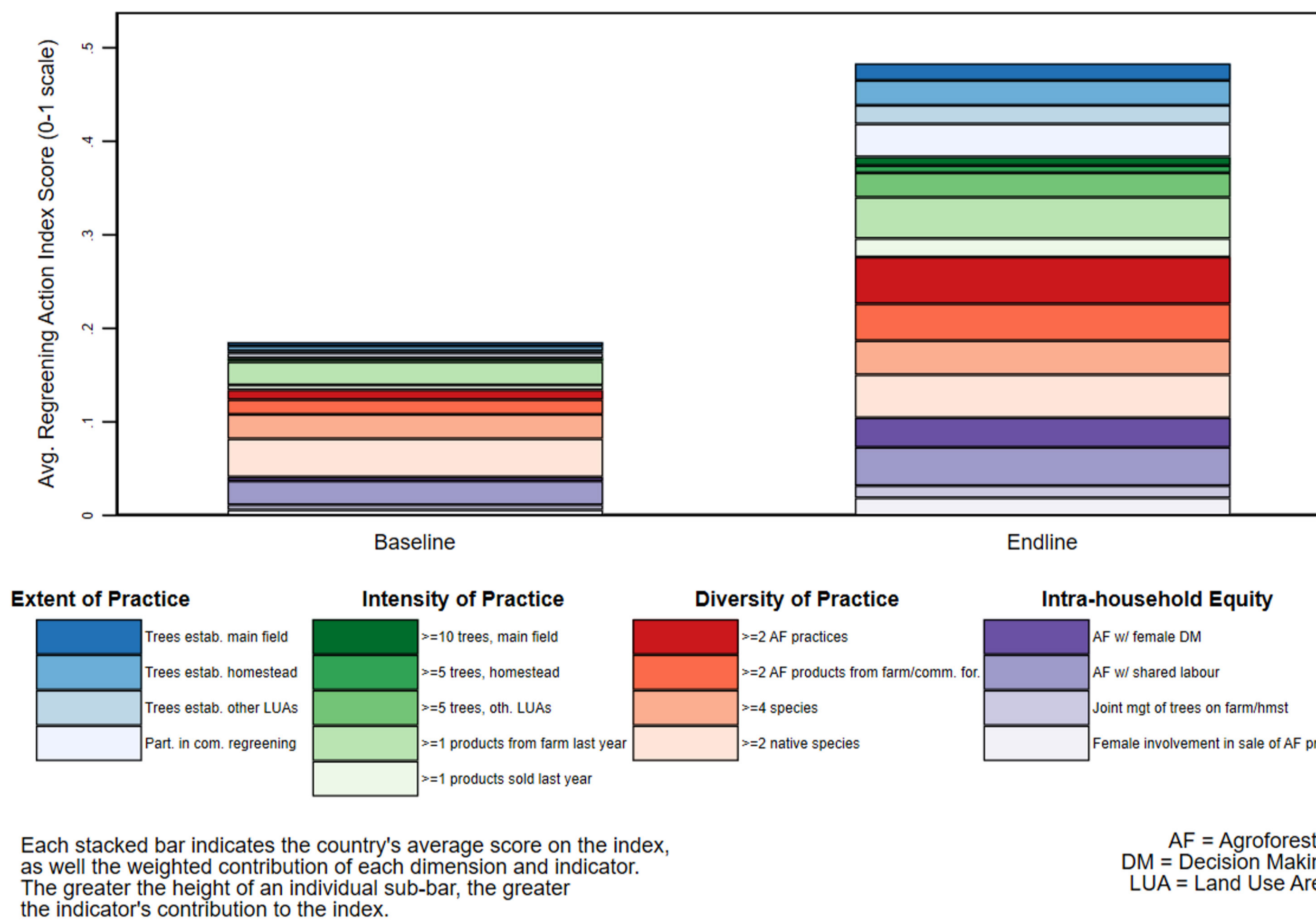
EVIDENCING THE EXPOSURE AND ADOPTION OF REGREENING INITIATIVES AND LESSONS LEARNED

Intensity and extent of uptake using the Regreening Action Index

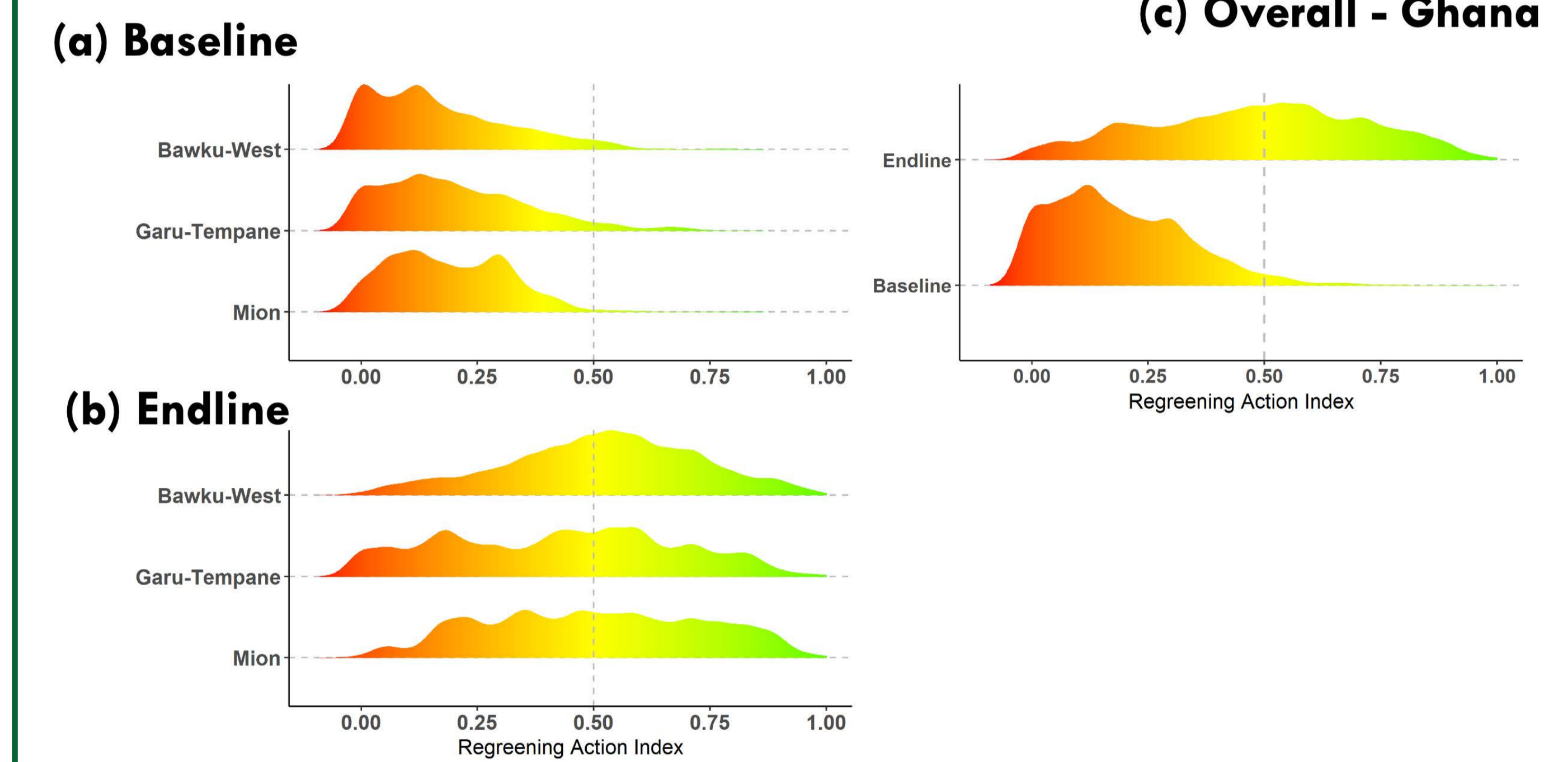


All the 4 dimensions increased significantly relative to the baseline, women **involvement** and **agency** increased


Regreening Action Index, baseline and endline surveys - Ghana




Significant proportion of HHs moved above 0.5 Regreening action index point (dotted vertical line) at the endline



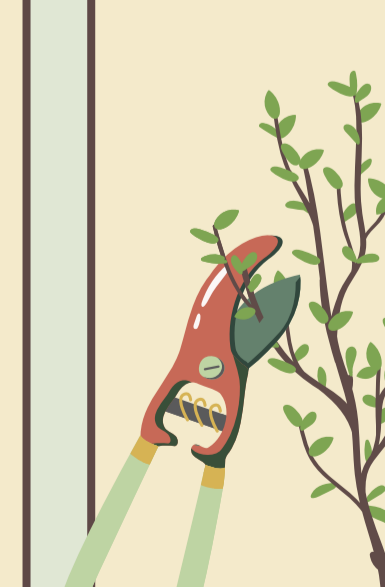
CONCLUSION AND OUTLOOK




Exposure was significantly increased, and more farmers are **engaged in land restoration** practices compared to the baseline



Women's involvement and **agency** in agroforestry practice have been increased, more women generated income from AF products



Low level of adoption, e.g., **Nursery and grafting** which requires review the current scaling model for future engagements



Modeling of expected longer-term gains in **total farm income** for farmers is underway as well as triangulation and enriching the results through **remote sensing**