

# GENDER TRANSFORMATIVE ACTION RESEARCH IN THE REGREENING LANDSCAPES OF NORTHERN GHANA



## SUMMARY OF RESEARCH PROJECT

Sustainable land restoration interventions requires addressing the inequalities women face both because of land degradation and restrictive cultural norms and customs that severely limit their control and access to land and resources.

The gender transformative action (GTA) research embedded within the Regreening Africa land restoration project in the Bawku-West District of Ghana applied an innovative participatory process using a series of gender engagement dialogues in 15 research communities. 150 couples were engaged in activities aimed at exploring priority gender issues within households over a period of 22 months.

## Key findings on gender and

- Current restoration does not target the livelihood needs and conditions of women.
- The land use and location where restoration is undertaken favours men and provides unequal benefits.
- There are inequities around labour of restoration: men and women sharing labour of implementation

## IMPACT OF GTA IN PROJECT COMMUNITIES



**LAND ACCESS:** 80% of women in 15 communities now have access to fertile homestead fields (about 0.5 acres to plant groundnuts/Bambara beans/bean/vegetables.)

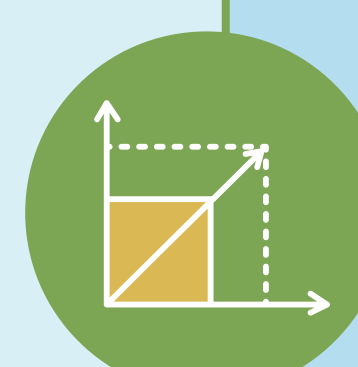


**IMPROVED LABOUR DIVISION** More than half of men now participate in household chores e.g. fetching water from longer distances using bicycles/motorbikes, washing clothes, childcare.

**95%** of men reported women now shared livestock care duty, this has drastically reduced livestock death or theft.



**INCLUSIVE DECISION-MAKING:** More than 70% of women reported 'feeling' included in household decisions (needs further reflection on how this translates into action).



**POTENTIAL EXPANSION** high interest from other non-participating households who have observed benefits.



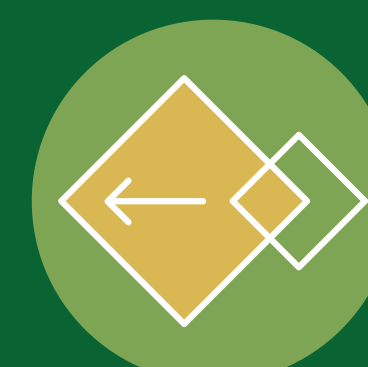
**All these are critical precursors for achieving gender equity goals in land restorations**

## OPPORTUNITIES FOR ACCELERATING SCALING



**Scaling Up:** Changes in policy, ways of collaboration

- Gender Transformative Approaches reflected in design, planing and budgets.



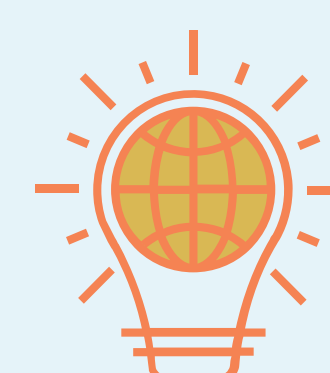
**Scaling Out:** Multiplication, extension, replication etc.

- Cross-cutting methodology (process, tools, training of trainers can be readily deployed to other programs and areas.
- Training and collaboration with District Assemblies and traditional authorities



**Scaling Deep:** Shifting mindsets, values and practices

- Local contextual factors key consideration in GTA design
- GTA is a continuous iterative process -sustainability
- Change is possible in a short time and accumulative overtime



## LESSONS FOR SCALING?

**1.**

Building social capital is critical for implementing GTA.

**2.**

Continuous support, action and engagement necessary owning the process and mapping pathways.

**3.**

Progress marking provides opportunity to celebrate success, reflect, recalibrate and encourages change.