

REGREENING AFRICA

Inclusive and Evidence-Based
Approaches to Accelerating Land
Restoration in Kenya

November 22-23, 2022 Nairobi



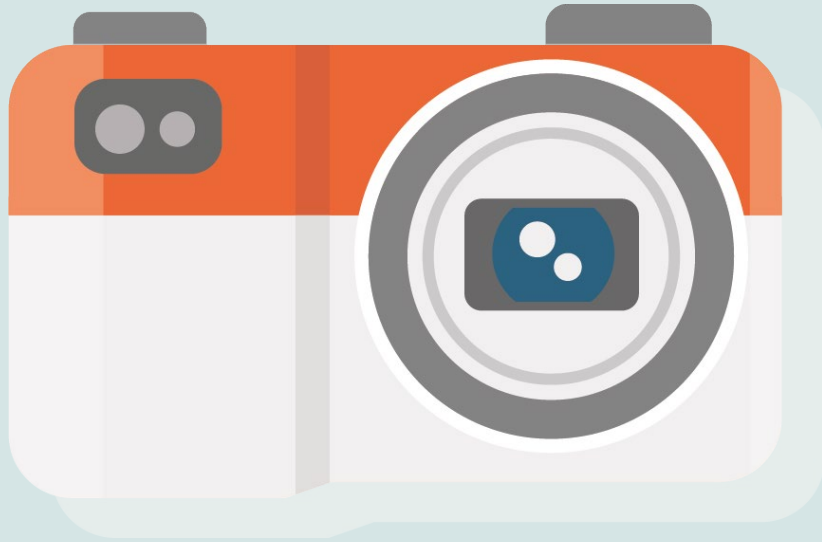


Photo consent form!

Introductions

- Government Agencies
- Donors, Investors and Private Sector
- Farmers and Community Leaders
- Non-Government and Civil Society Organizations
- Inter-Governmental Organizations
- Science and Academic Organization
- SHARED Facilitators



Please stand up by the category of your choice and introduce yourselves

Objectives

- **Showcase the Regreening Africa Programme successes and learning**
- Review and discuss the **implications of the evidence and experience** from 4+ years of implementation
- Take stock of the **current science, practice, policy, and institutional actions** in Kenya that contribute to land restoration and multiscale commitments
- Strategize how **ongoing efforts in Kenya can be linked to further support large scale restoration efforts**
- Action plan **future programmes, strategies, policy entry points, and resources** that need to be taken forward to expand land restoration at **local and national scale**

Workshop Overview



Opening remarks and perspectives
Overview of Regreening Africa in Kenya



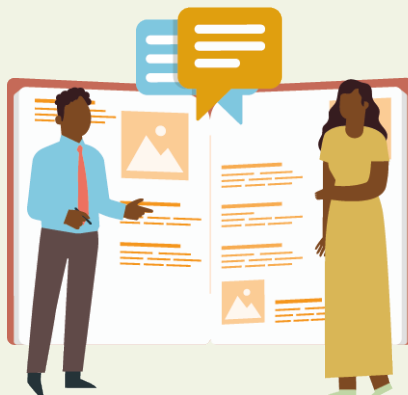
Interactive Experience and Evidence Wall
Decision Dashboard and Regreening App



Aligning visions, Understanding Incentives, Mapping Land Restoration Actions,



Closing Remarks



Action Planning and Commitments to Land Restoration in Kenya



Opportunities for Collaboration and System Change; Community, Science, Practice, Policy and Investor Dialogue

Principles of Engagement



Everyone is encouraged to share their views. Please keep your points succinct to allow others time to speak.



This is a working workshop. Be comfortable throughout.



Please keep to time.

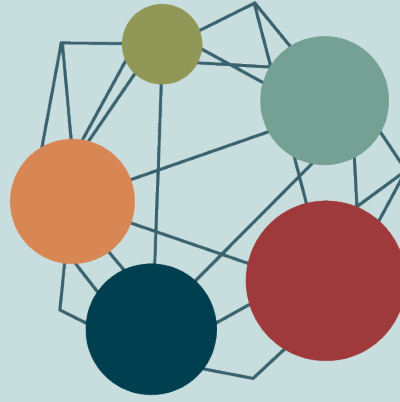


Enjoy the interactions and the content.



SECURITY BRIEFING

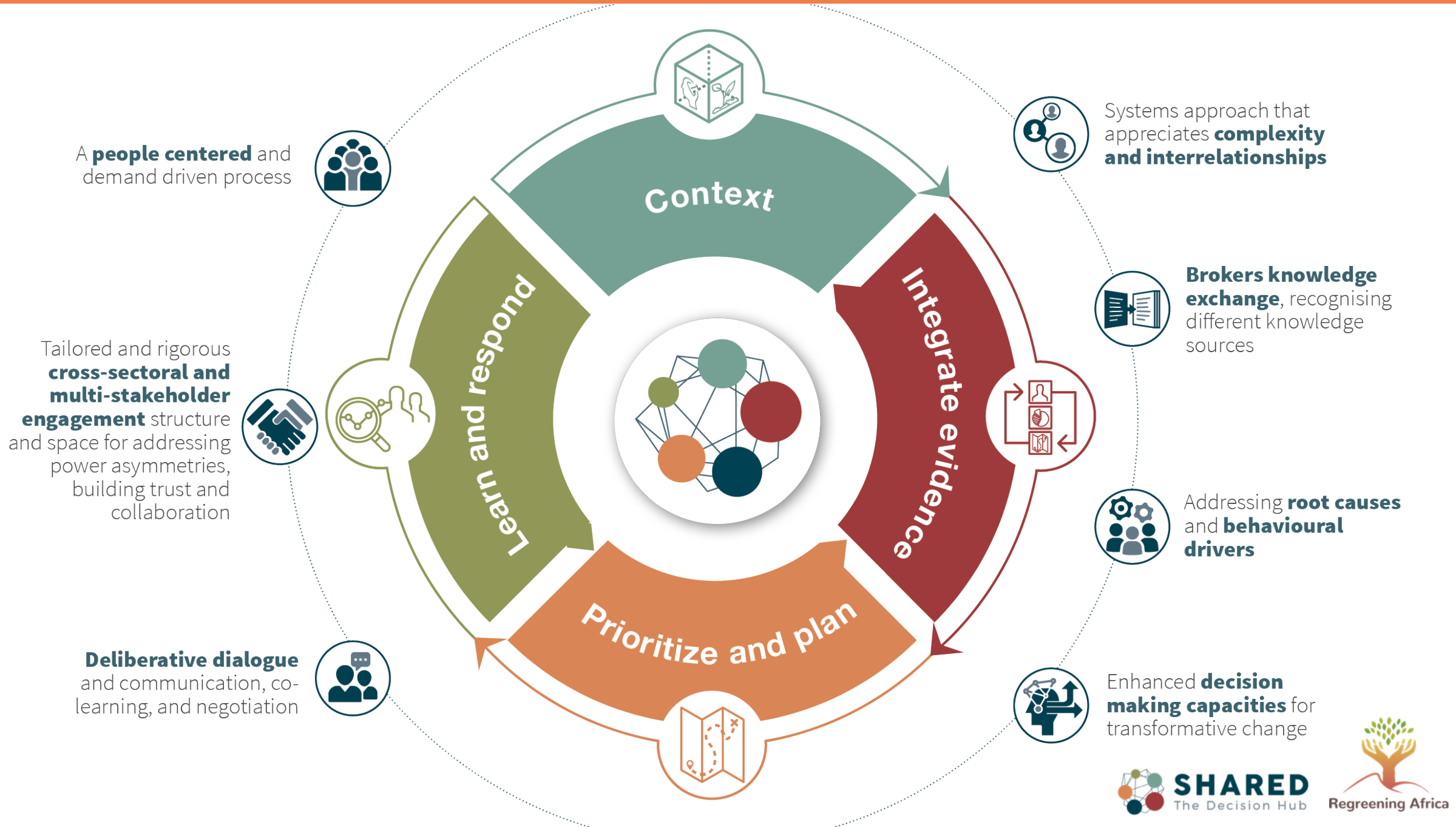




SHARED

The Decision Hub

The Stakeholder Approach to Risk Informed and Evidence Based Decision Making process is a tailored method for stakeholder engagement, managing relationships and brokering multi-stakeholder and cross-sectoral partnerships. The SHARED process is founded on a principle of fostering evidence-based decision making.





WELCOMING REMARKS

STRONGLY
DISAGREE

DISAGREE

NEUTRAL
NOT SURE

AGREE

STRONGLY
AGREE

In Kenya, we have a coordinated approach to bringing a wide range of stakeholders and evidence together for taking decisions on land restoration strategies

SETTING THE STAGE





Introduction to the Regreening Africa Project Mieke Bourne

Overview of the Kenya Regreening Africa Program Brian Wambua



PHOTO AND TEA BREAK



SHARED
The Decision Hub

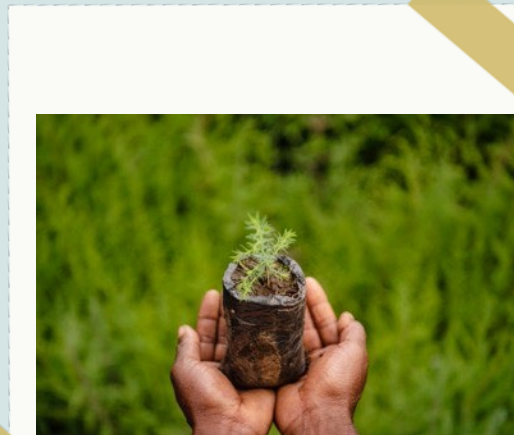


Regreening Africa

INTERACTIVE EXPERIENCE AND EVIDENCE WALL



Interactive Experience and Evidence Wall



Evidence and Experience Wall

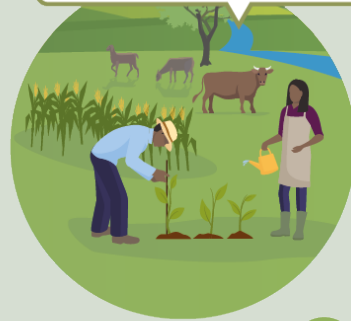
Why we use it?

- Encourage **dialogue and discussion** on the meaning, relationships, relevance, and implications of the information.
- Allow scientists, farmers, technical officers, NGO and Government partners, and Private Sector to **share, interact and discuss evidence in an interactive way**.
- Display information across different themes/sectors to **understand relationships and implications**.
- To bring results and data into discussion space to discuss and **understand trends and identify gaps** in information.



Testimonials

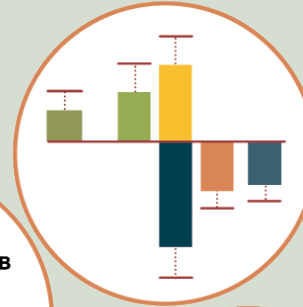
“FMNR improved productivity on my farm and improved nutrition for my livestock”



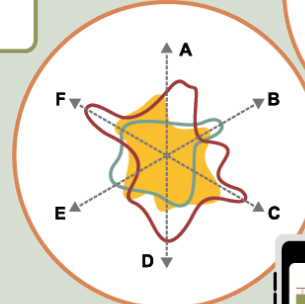
Photos and Video



Box plot



Data



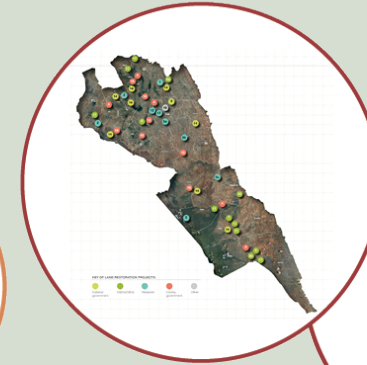
Radar chart



Bar chart



Maps



Regreening Africa

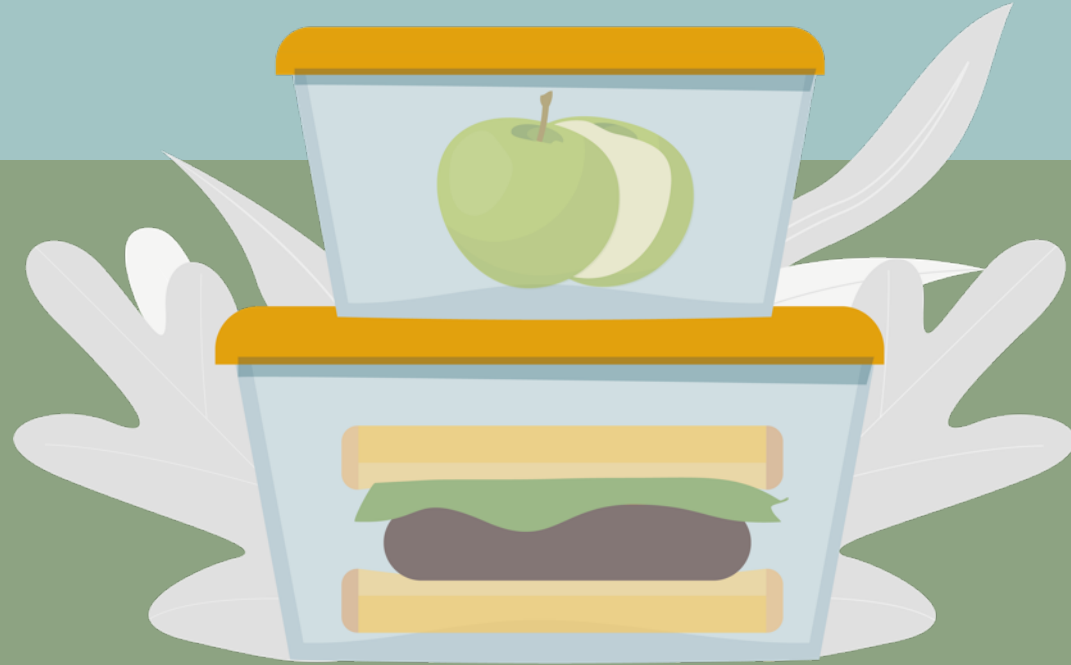
SHARED
The Decision Hub



- We will now take a tour of the evidence and experience wall as different colleagues share their insights.
- We will invite you to ask questions and share your insights and experiences.

- Please sign up for more hands-on training on the Regreening App and Dashboard on Wednesday 23rd November at 14.30PM





LUNCH BREAK

A CLEAR VISION AND PATHWAY FOR LAND RESTORATION IN KENYA





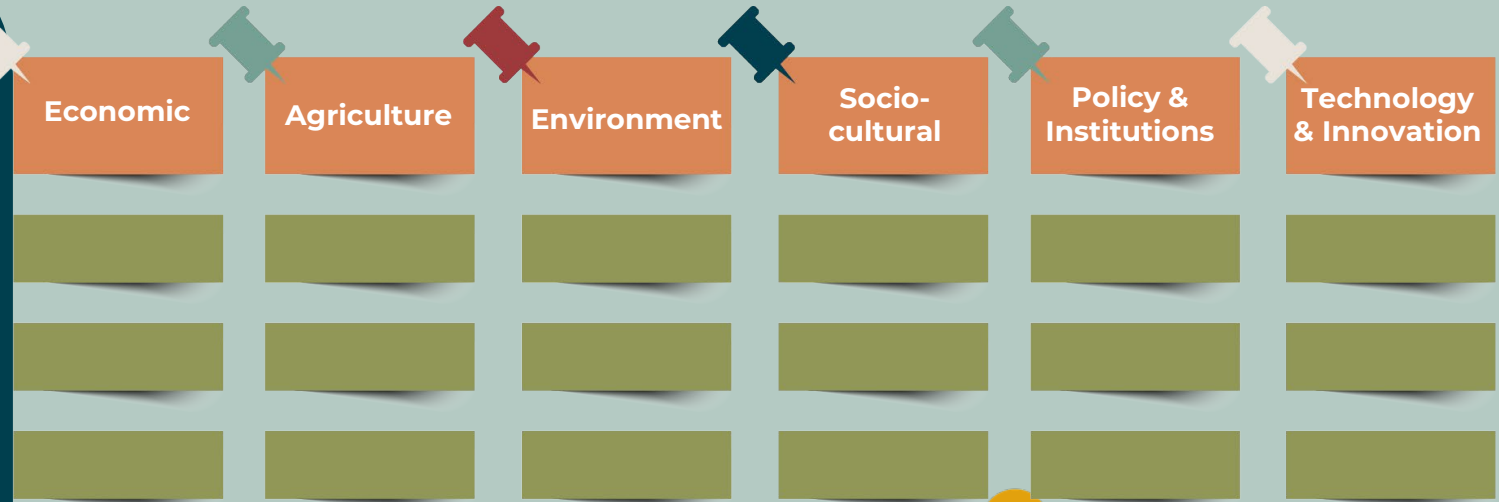
Policy direction and vision for Scaling of Land Restoration in Kenya (FOLAREP)

Peter Waweru

Senior Deputy Chief Conservator of
Forests

In pairs:

- Briefly discuss your aspirations for land restoration in Kenya.
- Use sticky notes to write down your aspirations and stick them on the provided pin board.



UNDERSTANDING INCENTIVES AND DISINCENTIVES FOR LAND RESTORATION IN KENYA



What are the Incentives and Disincentives to achieving our desired outcomes on land restoration?

Adopting Restoration Practices

Incentives

Disincentives

Promoting Restoration Practices

Incentives

Disincentives

Mobilizing Policies and investment to Support Restoration

Incentives

Disincentives

MAPPING LAND RESTORATION ACTIONS



- **Organization name/name of project/partners**
- **Where is the effort taking place** (list if multiple) **or planned?**
- **What type of restoration effort is it?**





Day 1 Closing Comments

We invite each person to say two numbers (from 1-5) in response to the questions below (1 = low and 5= high):

1. How optimistic are you about the potential for dramatically scaling land restoration in Kenya?
2. How empowered do you feel to positively impact land restoration in Kenya?



An illustration of three people standing in a meeting. On the left, a woman with dark skin wears a light green long-sleeved shirt over an orange top and a long yellow skirt. In the center, a man with dark skin wears a pink button-down kurta and dark trousers. On the right, a woman with dark skin wears a yellow short-sleeved dress. They are standing in front of a white table and a white chair. A potted plant with green leaves is on the floor to the left. The background is a solid green rectangle.

COFFEE AND TEA BREAK



SHARED
The Decision Hub



Regreening Africa

REGREENING AFRICA

Inclusive and Evidence-Based
Approaches to Accelerating Land
Restoration in Kenya

November 22-23, 2022 Nairobi



OPPORTUNITIES FOR COLLABORATION, SCALING AND SYSTEMS CHANGE



A woman in a red and white striped shirt and a blue headwrap is working in a bamboo nursery. She is surrounded by many bamboo plants growing in black plastic bags. The background is a dense bamboo forest.

Sustainability planning: Transitioning the Kenya Regreening Africa Program

Lucy Ojijo, World Vision
Kenya



COMMUNITY, SCIENCE, PRACTICE, POLICY AND INVESTMENT DIALOGUE





Community-Practice-Science-Policy-Investment Dialogue

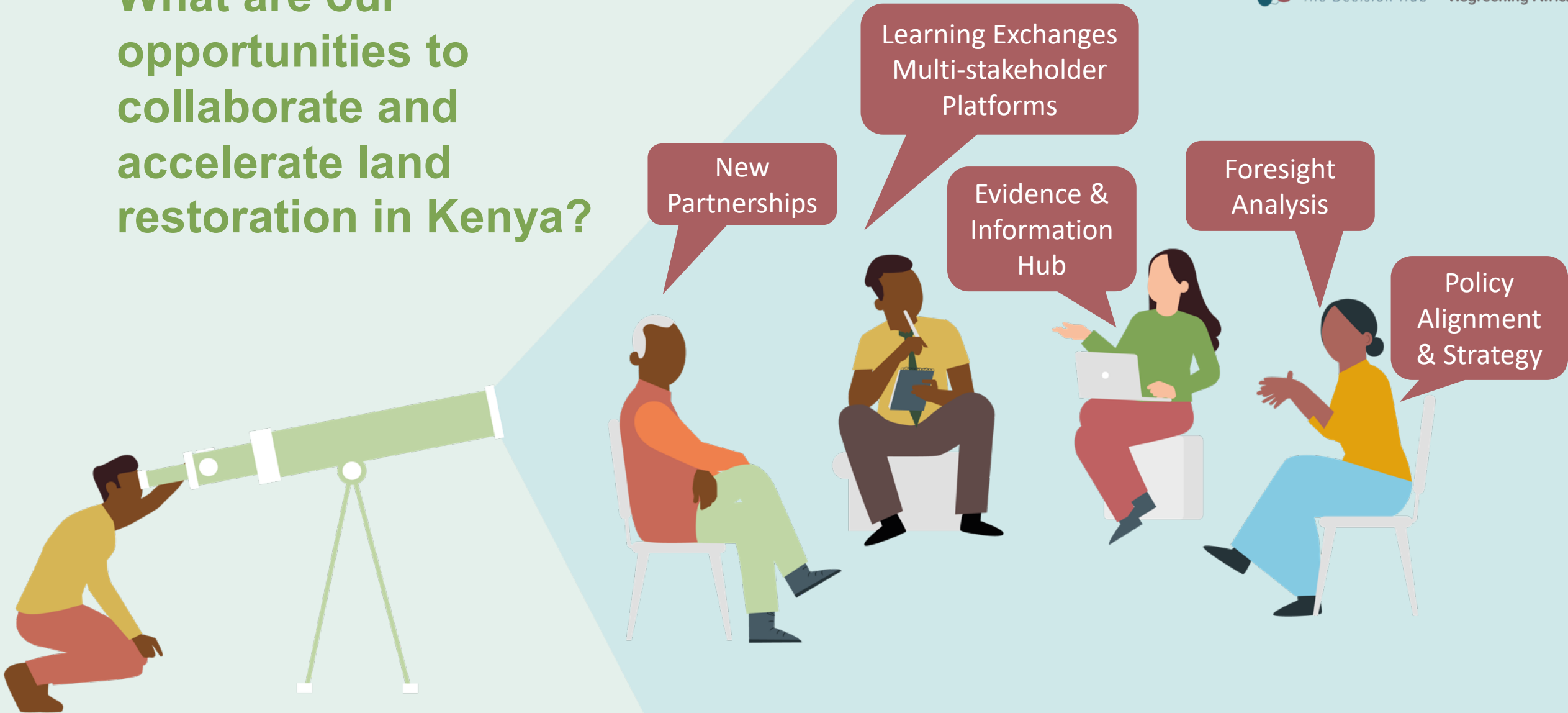
- Facilitated by Mieke Bourne, Regreening Africa Project Manager





COFFEE AND TEA BREAK

What are our opportunities to collaborate and accelerate land restoration in Kenya?



- What are the current gaps or barriers that need to be filled or sorted?
- Where are your recommended actions to enhance land restoration outcomes, by whom and when should they take place?

WHAT

WHEN

BY WHOM



- In your table groups, please identify a moderator and a note taker (using sticky notes).
- Consider the gaps that need to be addressed and the incentives and disincentives we have discussed.
- Where are your recommended actions to enhance land restoration outcomes and who should be involved?
- Place these recommended actions and who should be involved along the timeline on the wall.



2022-2025

2025 - 20306

The Big Opportunities

Science,
Evidence and
Information

Partnerships
and Platforms

Scaling
Practices

Enabling
Policy &
Alignment and
the AF Task
Force



Where have we been?



SHARED
The Decision Hub

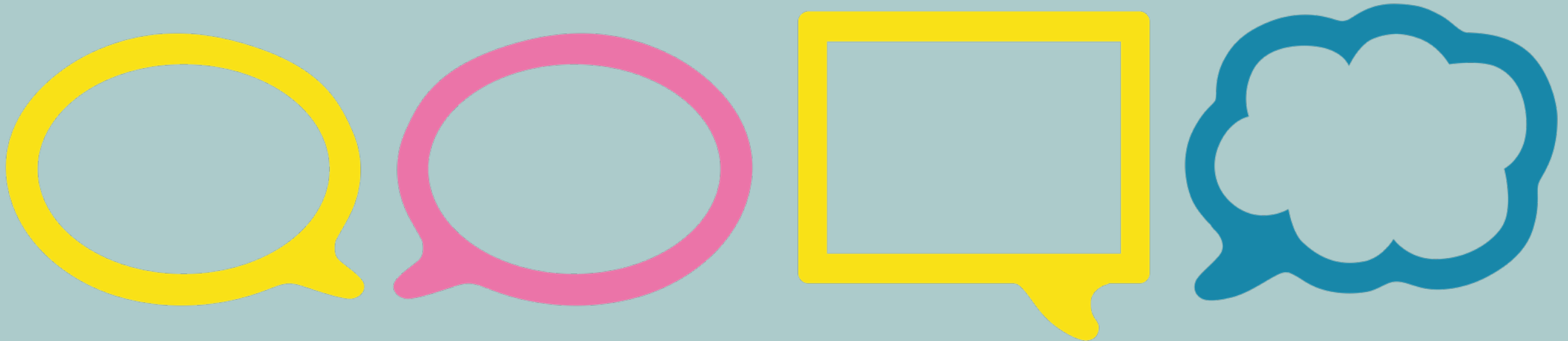


Regreening Africa

CELEBRATION OF COMMITMENT TO LAND RESTORATION IN KENYA



Using the cards that have been distributed, please write your or your institution's commitment to land restoration in Kenya?



FORMAL CLOSE AND LUNCH

EXTRAS BELOW



QUESTIONS AND FOLLOW UP



SHARED
The Decision Hub



Regreening Africa

Stretch Bro

