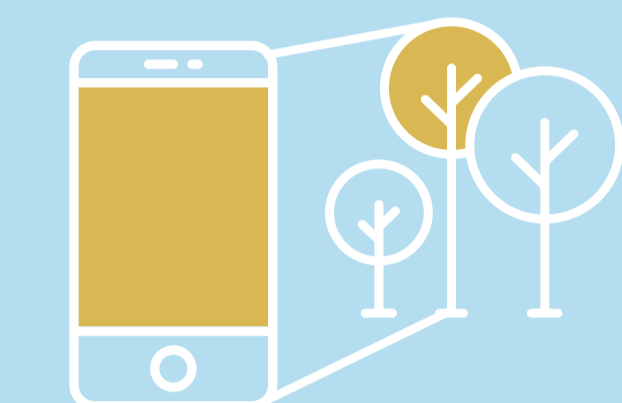


KEY INTERVENTIONS AGAINST LAND DEGRADATION

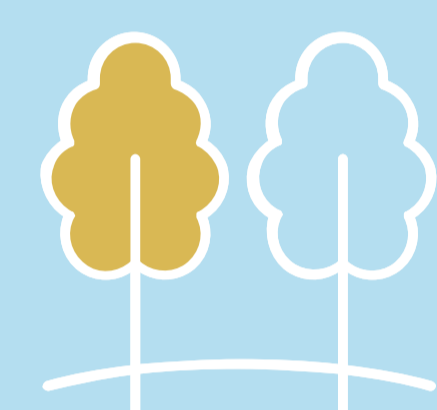
Tree Biomass Incorporation

- Use of fertilizer trees, e.g. *Gliricidia sepium*, *Calliandra calothyrsus*, *Leucaena diversifolia*, *Senna spp*
- Improves soil fertility, soil organic carbon, soil water storage



Regreening App

- Important tool to monitor and visualize trees planted
- Promotes citizen science and local ownership of initiative



Tree Management

- Pruning and Coppicing to reduce competition
- Weeding
- Manuring



Tree planting

- Saplings of *Grevillea robusta*, *Eucalyptus*, and *Solanum betaceum* most common
- Used for fruit, fodder and other non-timber product value chains, and are commonly planted as boundaries, along roads, among crops, or within home gardens for household

FMNR

- Promoting indigenous species and management
- Provides livestock shade, fodder, timber, and firewood while restoring landscapes

Nurseries and Rural Resource Centers (RRCs)

- Tree nursery cooperatives are playing an important role in producing seedlings in communities for improved tree planting outputs and scaling
- 4 RRCs were established to demonstrate and disseminate technical knowledge and improved planting materials, as well as provide training in entrepreneurship and value chains