

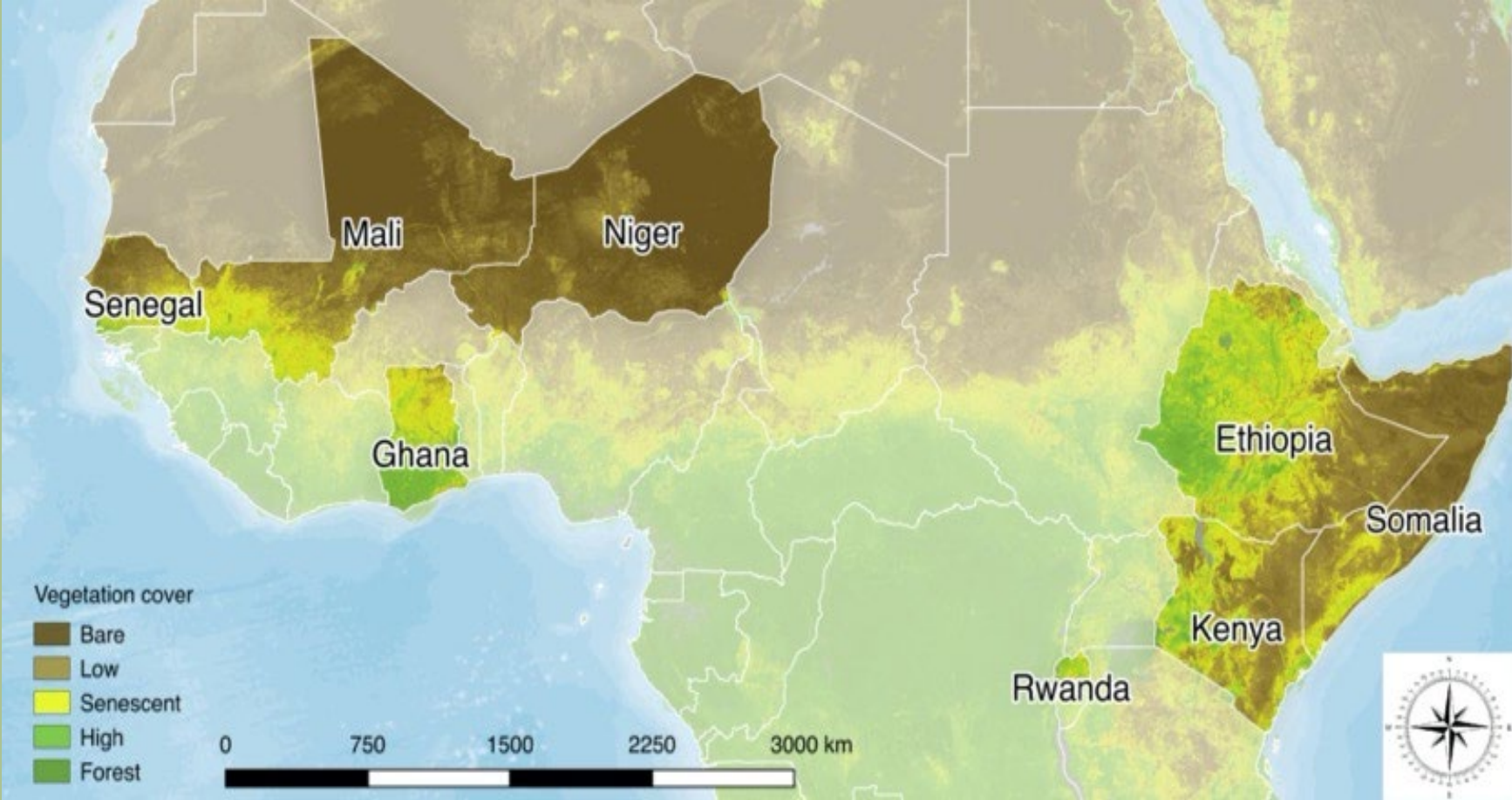
Regreening Africa (2017-2023)



*500,000 households,
across 1 million hectares*



*Incorporating trees into
croplands, communal
lands and pastoral
areas with
complimentary
sustainable land
management practices*



Achievement on targets by September 2021



500,000

401,297

127,073

HHs: target

HHs: reached to date

HHs: verified (uptake surveys)



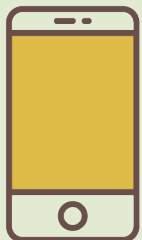
1,000,000 **Ha:** target

665,924

311,199

Ha: reached to date

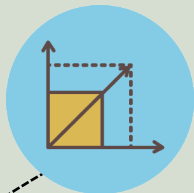
Ha: verified (uptake surveys + App)



377,810 hectares

145,624 households

Captured with the Regreening App by August 2022



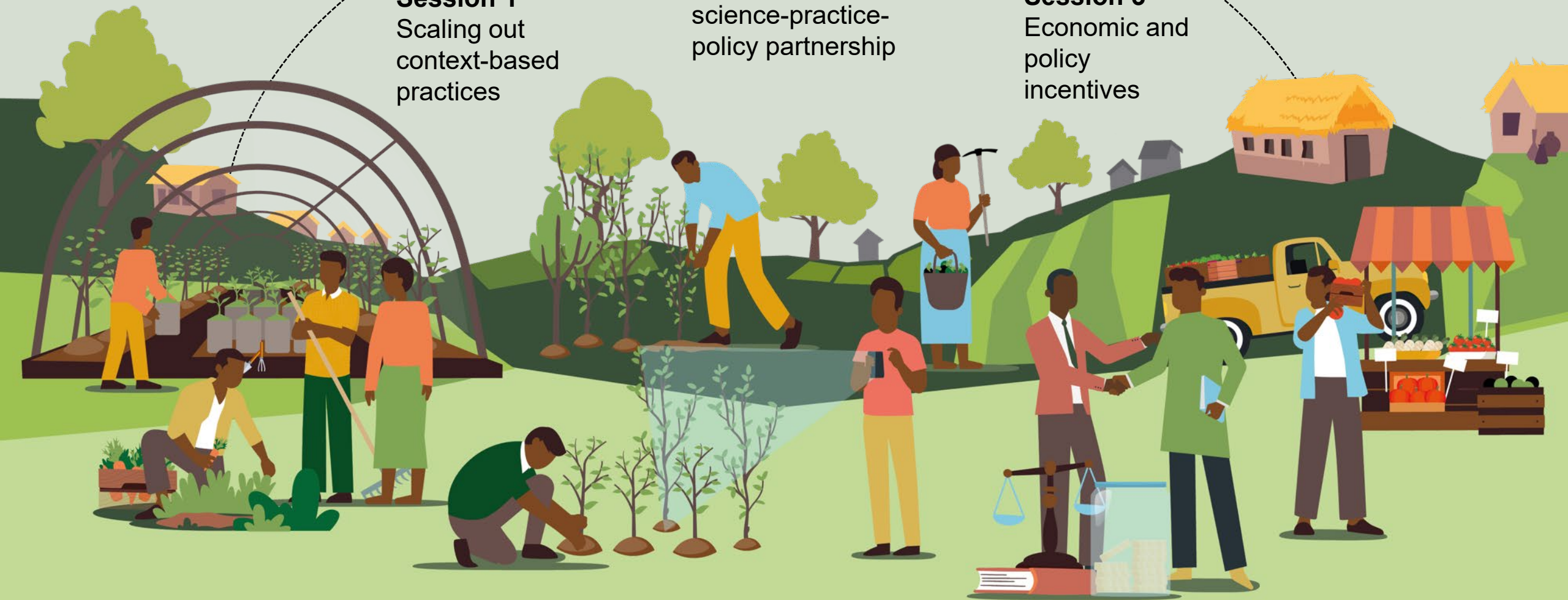
Session 1
Scaling out
context-based
practices



Session 2
Regreening Africa
science-practice-
policy partnership



Session 3
Economic and
policy
incentives



On the road to GLF Africa



GLF AFRICA
DIGITAL
CONFERENCE
15.9.2022

**HOW TO
BUILD AN
EQUITABLE,
RESILIENT
FOOD FUTURE**

ONLINE

DISCOVER MORE GLF AFRICA 15 September 2022

© Axel Fassib/CRDR