



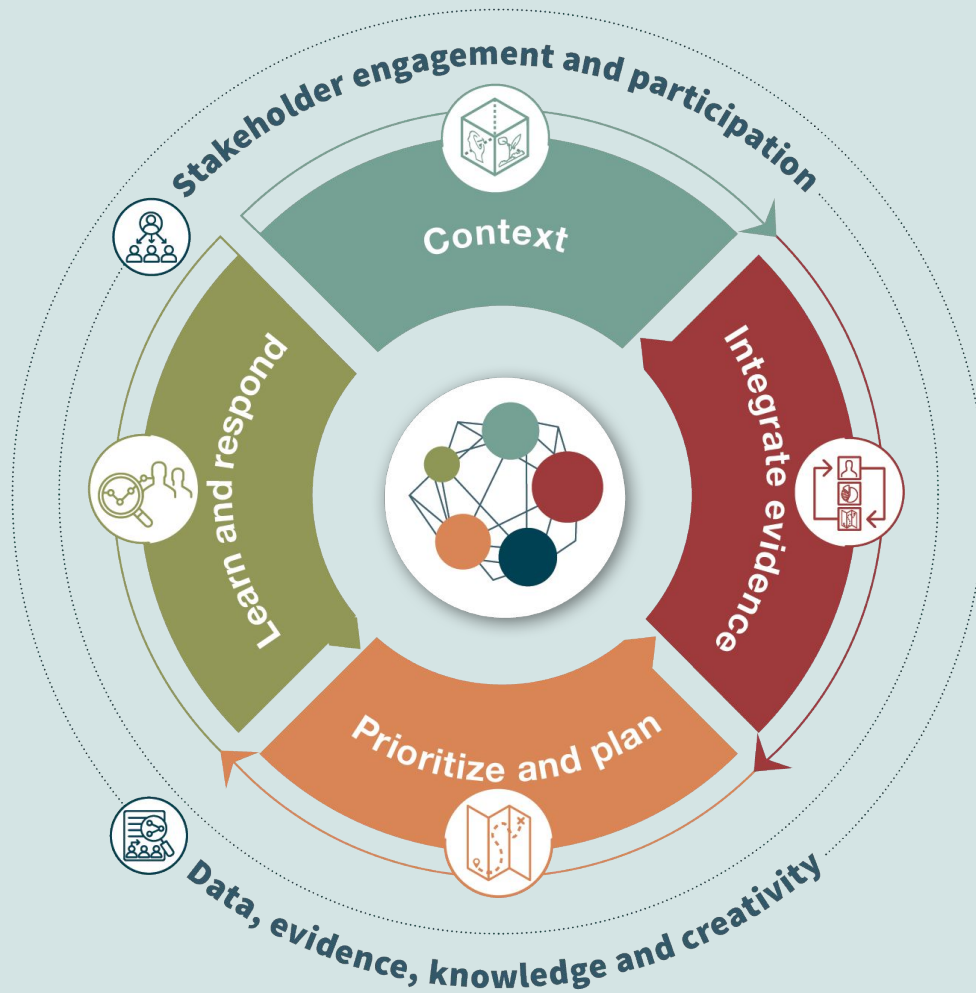
## Integrating evidence and practice for adaptive management: The role of Joint Reflective Learning Missions

Constance L. Neely, Lead SHARED Decision Hub



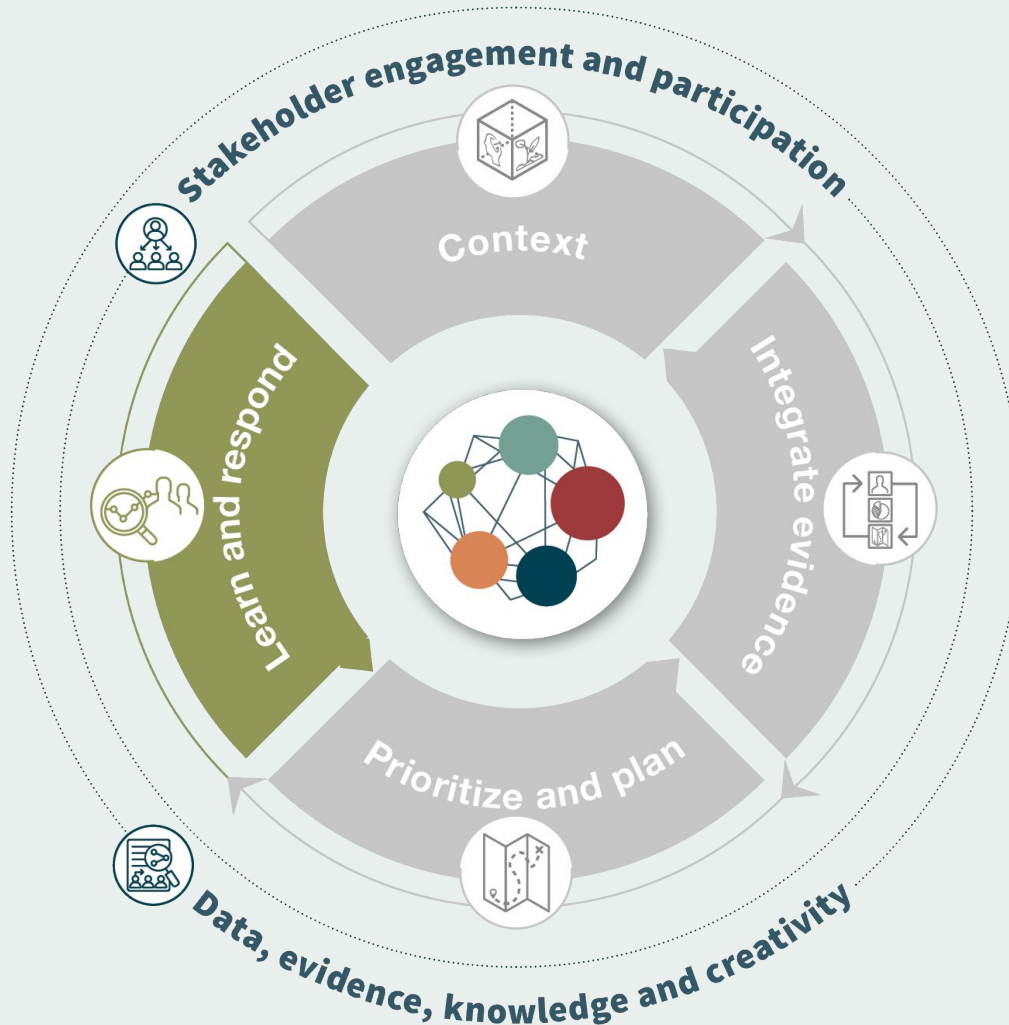


## SHARED framework



- The SHARED Decision Hub is a collective of stakeholder engagement, behavioural specialists and transdisciplinary scientists
- SHARED works within Regreening Africa to **strengthen the linkages** across science, practice and policy and among country teams.
- Focuses on **relationships, tailored engagement** and breaks down the complexity within the project to **sequence these engagements and access to evidence** to technically backstop both the implementation learning and policy entry points.

# Joint Reflective Learning Missions: A novel approach to annual monitoring and adaptive learning



With the complex nature of the program with multiple development implementors and supporting scientific components and intention of enhancing an enabling policy environment working in eight country contexts - a robust engagement process was designed to bring experiences and evidence directly in to adapt annual planning cycles.





# Joint Reflection Learning Missions

A reflective and learning process among diverse partners to interrogate and integrate these multiple evidence sources into practice and policy



**Practitioners, farmers, scientists, and decision makers work together through structured engagement processes to interrogate and reflect upon scientific evidence and practical experience to adapt plans for greater impact.**



**Field Visits**



**Interrogation of  
Interactive  
evidence and  
experience wall**



**Reflections on  
implementation,  
scaling and  
leveraging**



**Policy  
influencing**



## Field Visits



Structured interaction among farmers, local authorities, development practitioners, national government, scientists in farmers fields

## Interrogation of interactive evidence and experience wall



Field progress, challenges and opportunities

Citizen science from Regreening Africa App

Land health data

## Reflections on implementation, scaling and leveraging



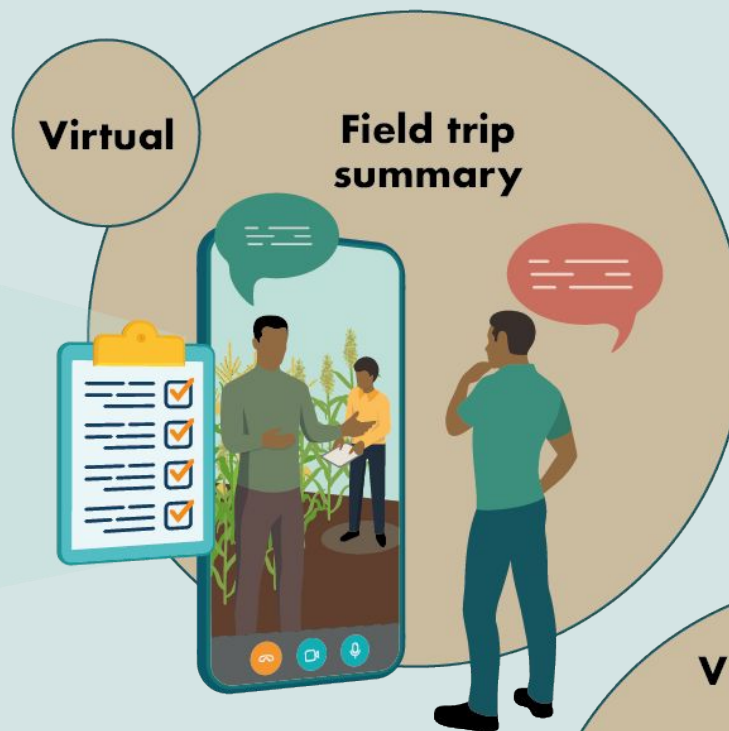
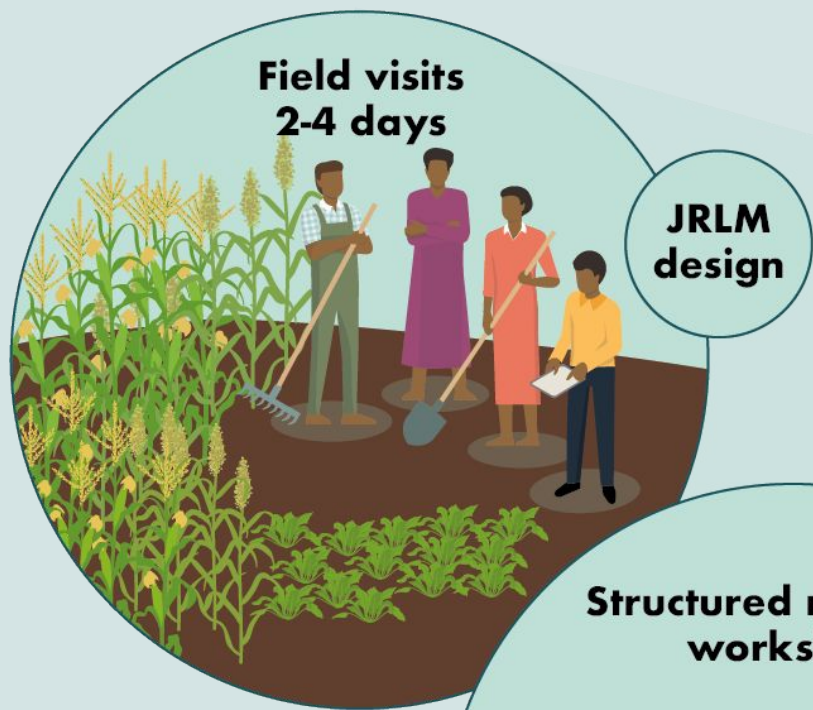
Designing amendments to technical support, implementation, outreach and communications, and capacity building based on evidence interrogation

## Policy influencing



Using tools such as outcome mapping to clearly articulate target stakeholders for change, process for engagement and messaging.





## Photos

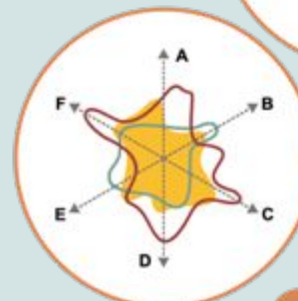


## Testimonials

"FMNR improved productivity on my farm and improved nutrition for my livestock"



## Data



Radar chart

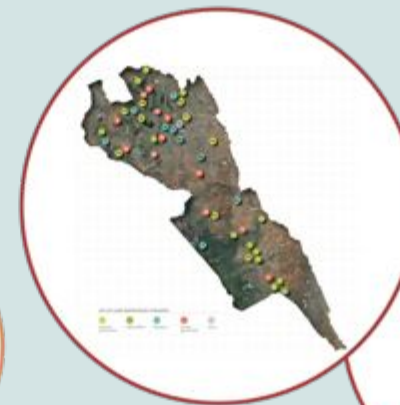
## Box plot



Bar chart



## Maps





## Examples of Outcomes of the Joint Reflective Learning Missions

- Thematic cross-country learning and exchange events and visits
- Adjusted scaling model in Senegal
- Diversification of species in Rwanda
- Greater Uptake of Regreening App in the sites
- Target technical support and emphasis on where we needed additional resources to reach targets.





# Key aspects for joint reflection, monitoring and learning

## Creating a neutral space.

Provides a space to jointly and honestly reflect on challenges, mistakes, innovations and bring together implementation and scientific findings and perceptions.



**Structuring dialogue for deeper understanding.** Uses facilitation to understand the overall system, unpack themes, trends, behaviours and implications.



**Monitoring that makes a difference.** Allows for the rapid reflection and incorporation of evidence and experience for course correction and adaptive planning processes



**Strengthening relationships and enhancing interaction**





# The JRLM is a scalable approach that can be applied to other contexts



Building relationships amongst development, research and policy partners



Skilled facilitators structuring and facilitating the dialogue



Bringing evidence and experience in accessible forms



Co-generating actionable recommendations



Closing the learning loops and adaptive management

