



Regreening Africa

Inclusive and Evidence-Based Approaches to Accelerating Land Restoration

June 2022, Dakar, Senegal

Hilda Kegode, Karl Hughes, Ibrahim Ouattara, Tesfaye Woldeyohanes

MEL Component

www.regreeningafrica.org



MEL uptake surveys in Senegal October 2020 and July 2021

Done only in the direct intensification sites

Targeted households in intervention clusters and villages

Objective: assess programme performance in terms of

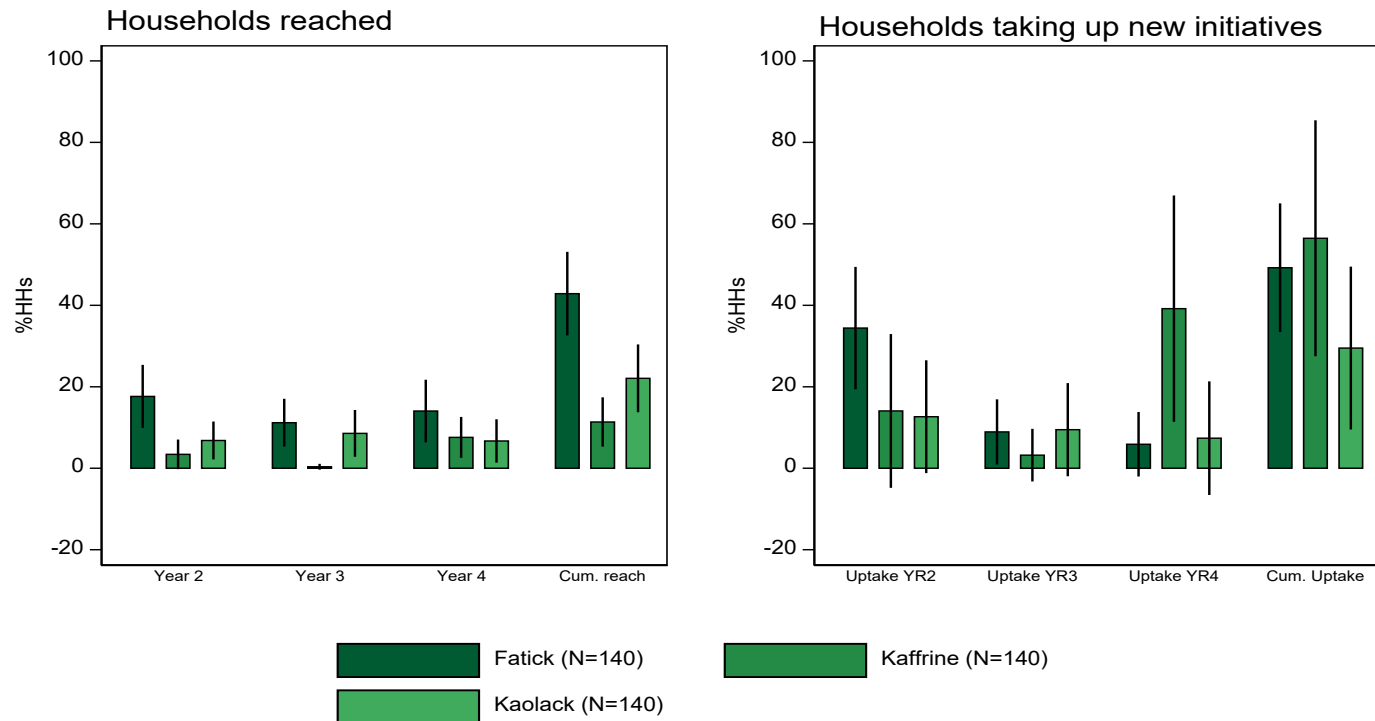
- exposure to regreening practices
- uptake of regreening practices
- estimated number of households reached and practicing
- estimated hectarage under regreening

Targets:

Households: 80,000 (50,000 directly and 30,000 leverage)

Hectarage: 160,000 Ha (100,000Ha directly and 60,000Ha leverage)

Exposure to and uptake of new regreening initiatives over the implementation period



with 95% confident intervals
 sampling weights used to account for differences in population sizes among surveyed village clusters
 Year 2: July 2018 to June 2019
 Year 3: July 2019 to June 2020
 Year 4: July 2020 to June 2021

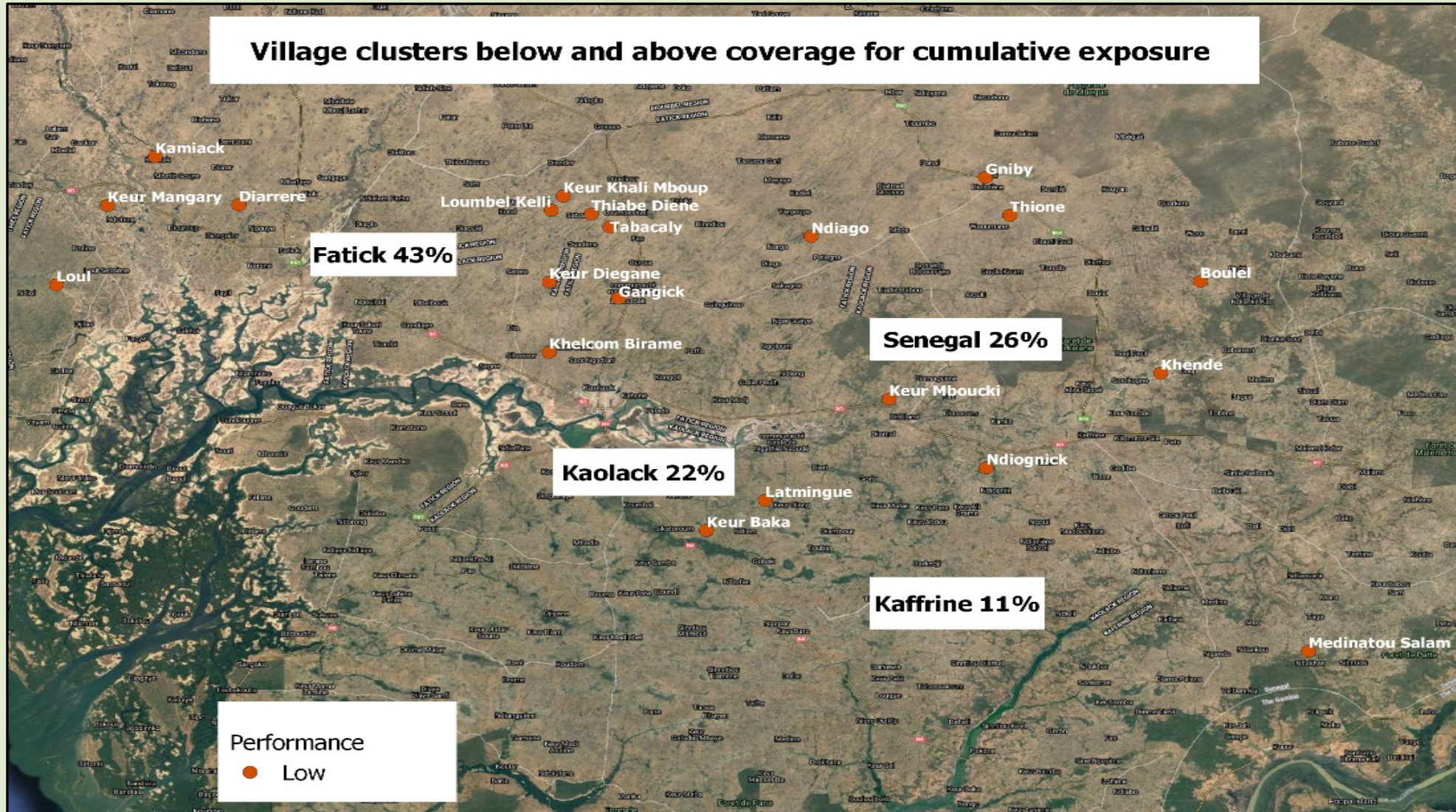
Figure 1: Households Reached and Taking up new Regreening Initiatives (July 2018 to June 2021)

Low exposure in all the programme areas
 Low saturation

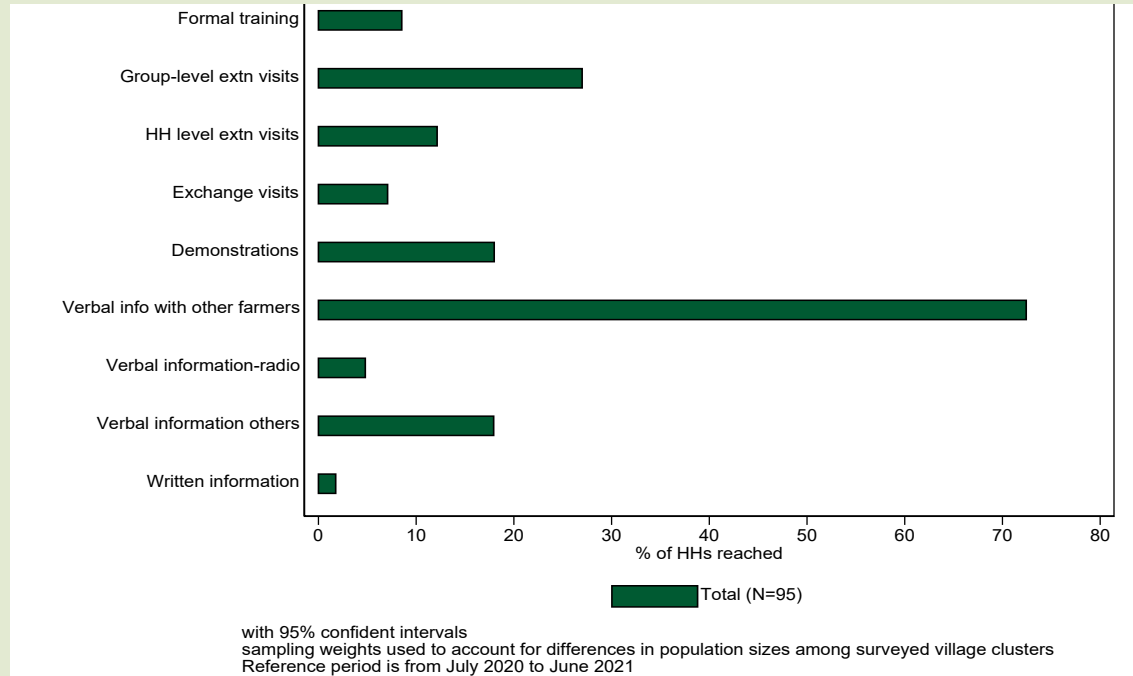
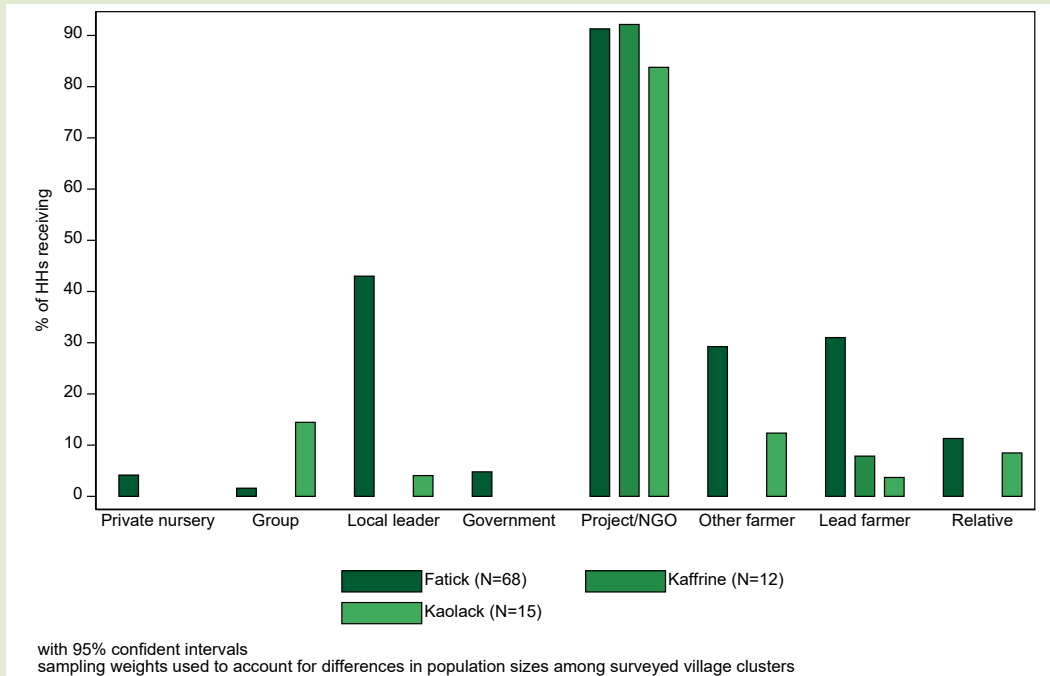
Low uptake rates for households reached.
 More HHs are taking up practices in Kaffrine despite the low exposure

What are the barriers to exposure to and uptake of regreening initiatives in all the programme areas?

Improve saturation in all the sites



Sources of agroforestry related external assistance and methods of providing assistance in the last 12 months prior to survey



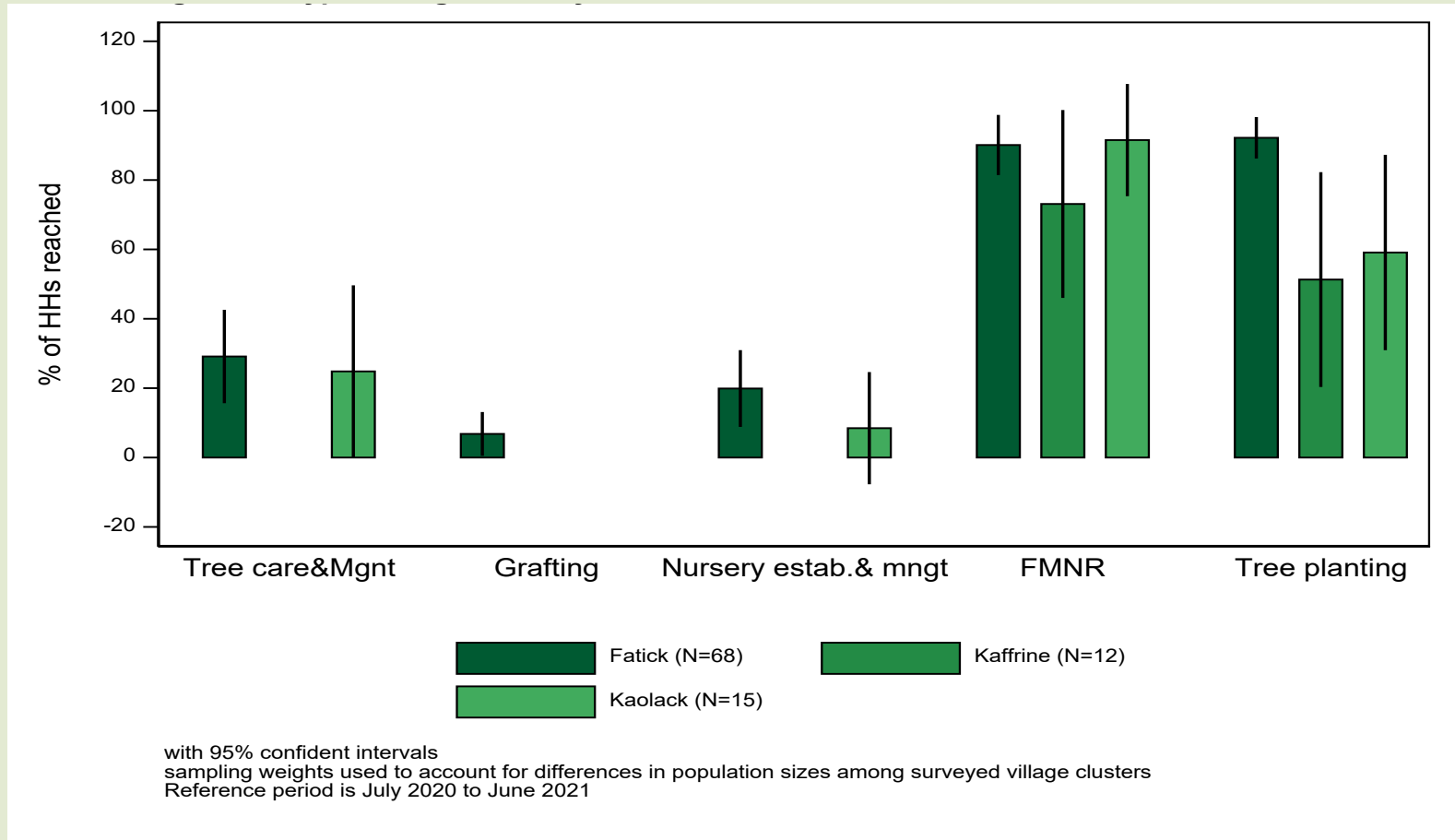
Sources of agroforestry related external assistance in the last 12 months

NGO/project is the main sources of external assistance, raising concern on sustainability

Methods through which HHs were reached in the last 12 months

Verbal exchange of information with other farmers is the main method used to reach HHs

Types of agroforestry related external assistance received in the 12 months prior to survey

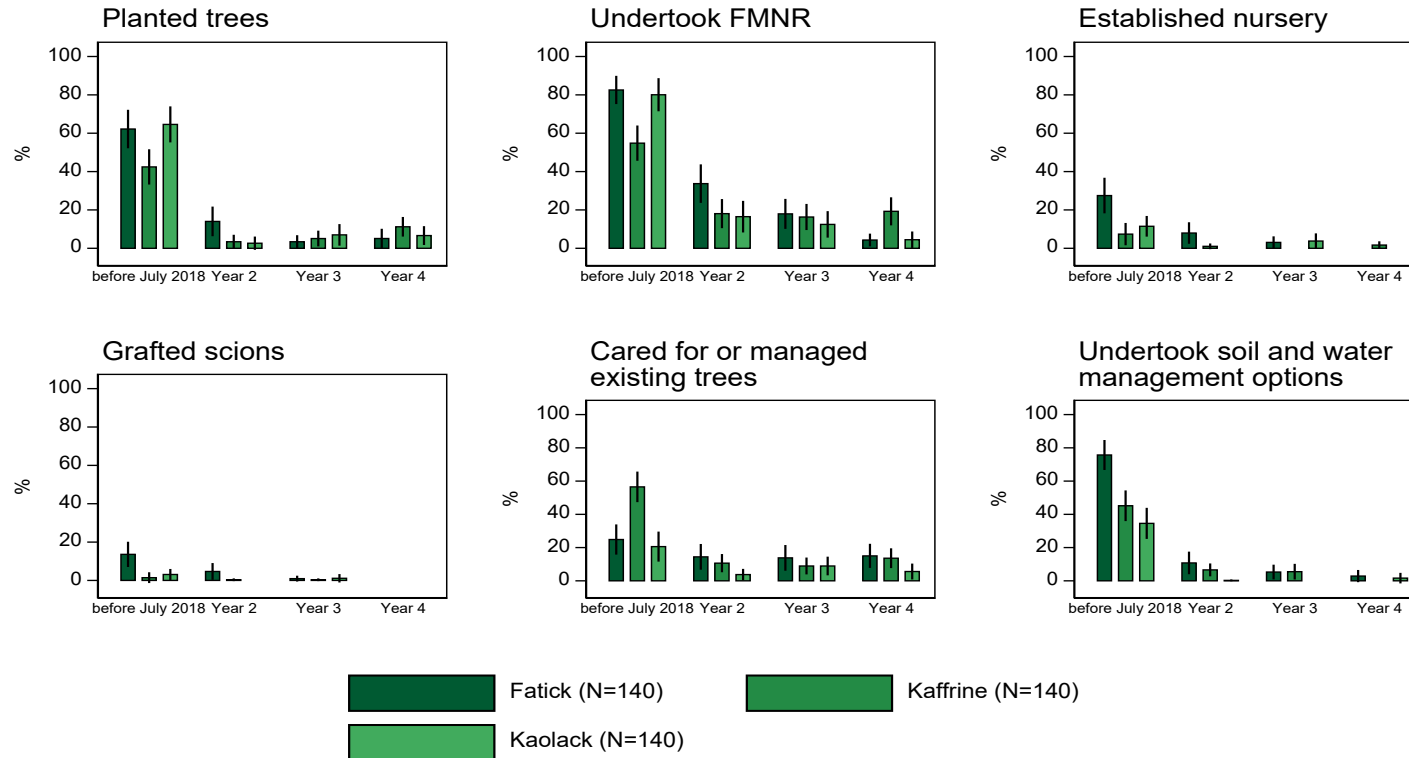


External support is predominantly FMNR and tree planting

Types of agroforestry related external assistance received in the last 12 months

Uptake of new regreening initiatives and other restoration practices

Figure 2: First time HHs Undertook Specific Restoration Actions

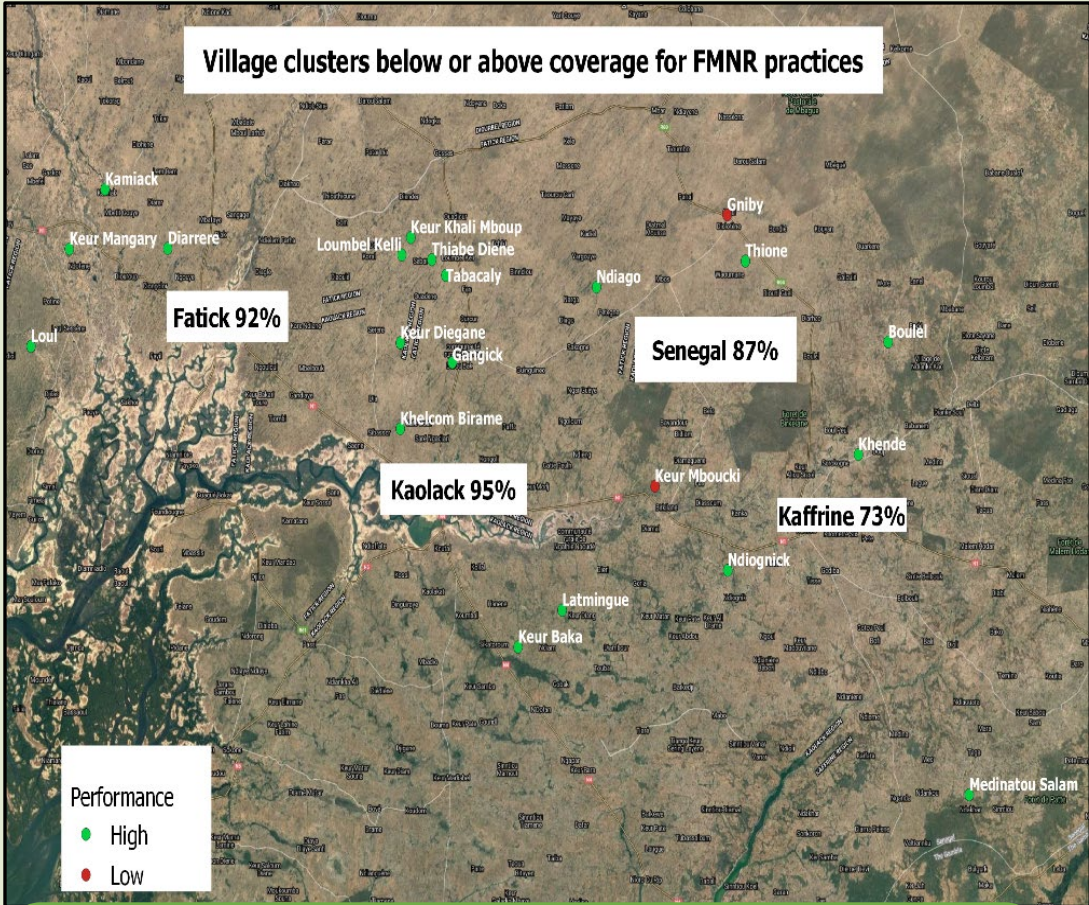
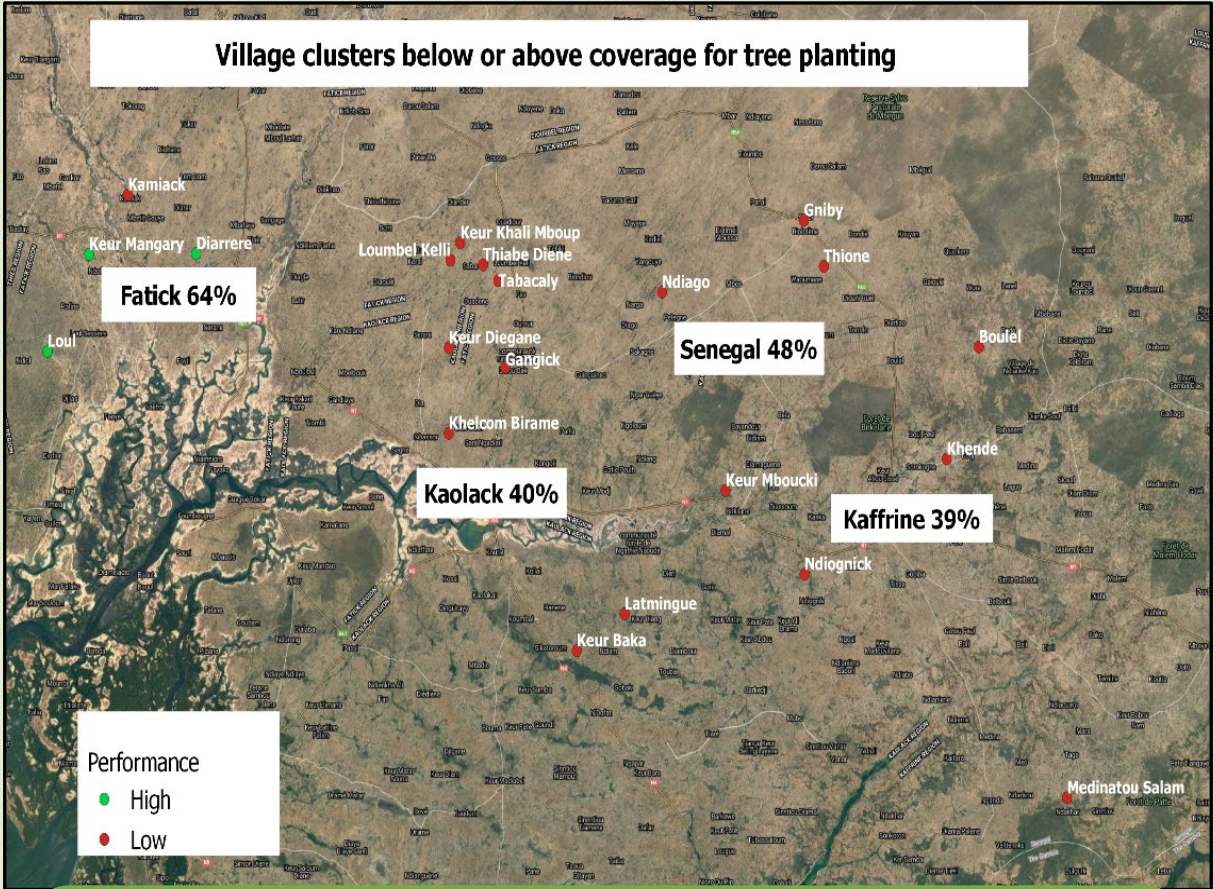


During project period, FMNR taken up by new HHs more than other practices

More HHs practicing FMNR and other regreening or restoration practices before start of the Regreening project

with 95% confident intervals
 sampling weights used to account for differences in population sizes among surveyed village clusters
 Year 2=July 2018 to June 2019
 Year 3=July 2019 to June 2020
 Year 3=July 2020 to June 2021

- Performance of Tree planting and FMNR practices

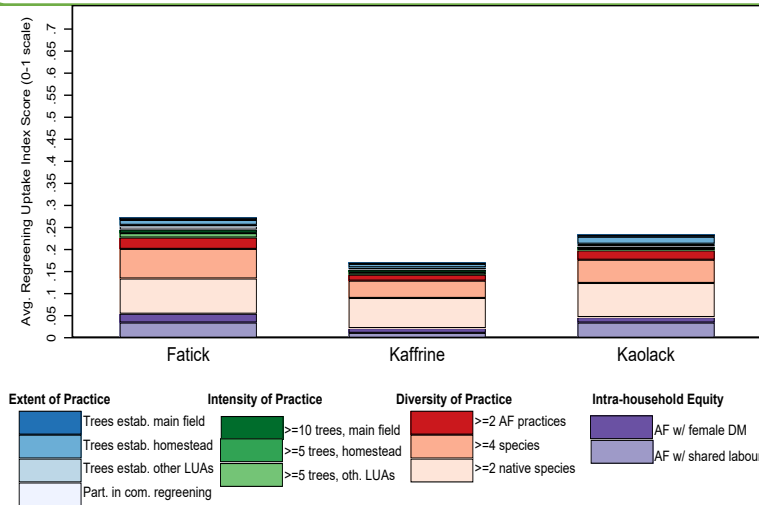


- What are the barriers to uptake of tree planting in Senegal?
- 3 clusters in Fatick can act as learning sites for low performing sites

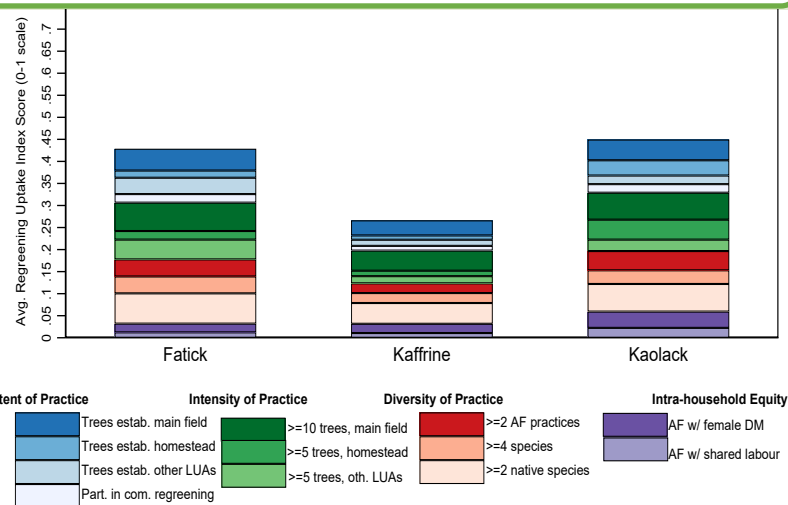
Need to improve uptake of FMNR in Gnibi and Keur Mboucki

Regreening Uptake Index: Changes in Dimensions and binary indicators

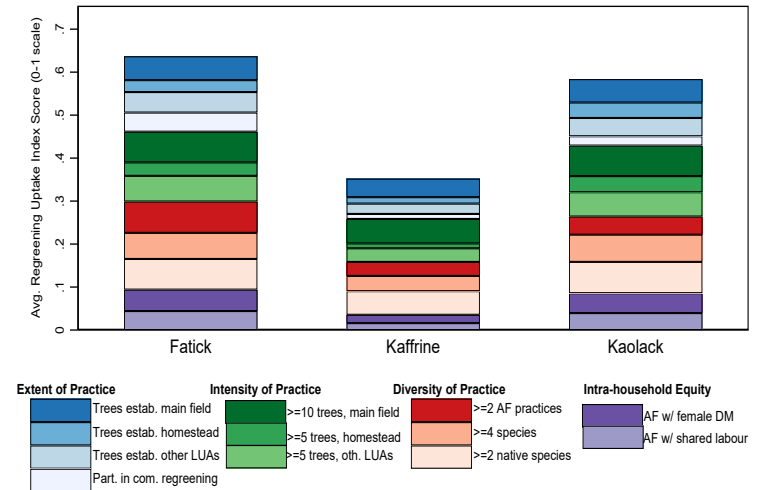
Baseline



Year 3



Year 4



Progressive improvement of the index in all the regions

Improvement in intensity and extent of practice dimensions

Improvement in female decision-making indicator, but intra-HH equity dimension needs attention

Areas requiring attention and action points

- **Low involvement of women in restoration**

- Identify barriers to women's involvement
- Gender transformative approaches to promote integration of women

- **Low diversity of practices**

- Low uptake of tree planting in most village clusters areas in the 3 programme areas

- **How to improve performance**

- Saturation in all programme areas
- Effectiveness of the scaling model in all sites

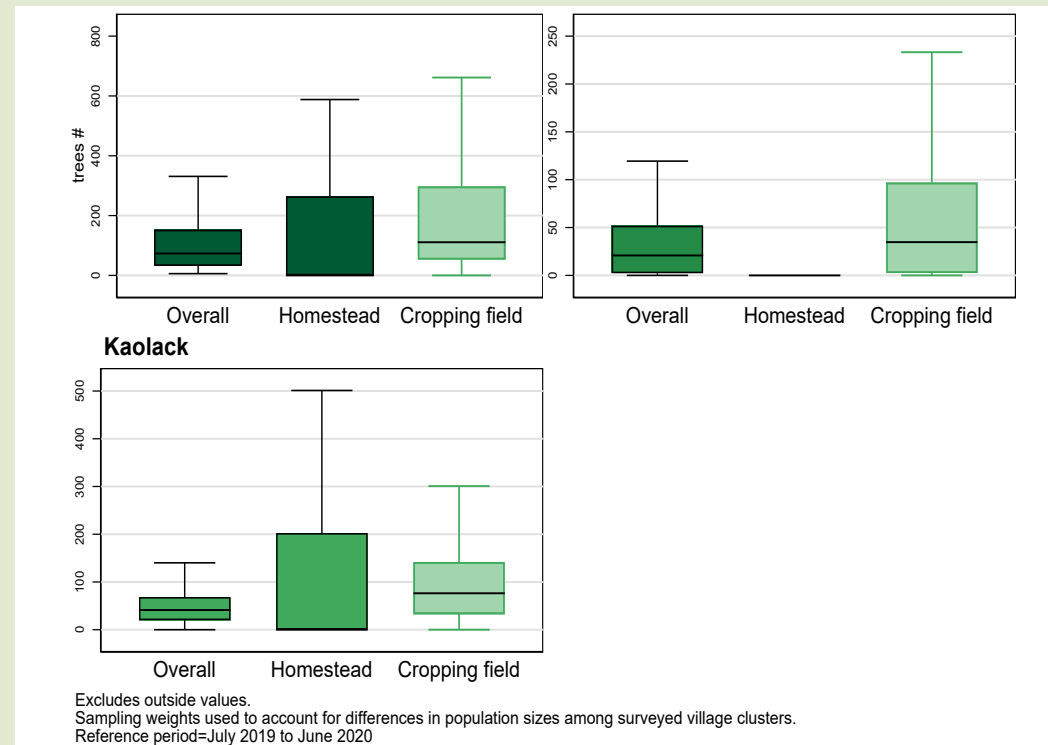
Areas requiring attention and action points

- **Low tree density particularly in Kaffrine**

- Extension messages should focus on having more trees per hectare to maximise benefits of restoration

- **Low levels of targets (hectarage and number of HHs)**

- What is needed to get closer to the targets by end of Year 5?



Approximate # of Trees per Ha, overall vs. cropping fields and homestead

Way forward

- **Tracking leveraged adoption**

Discussion on sampling frame for the Regreening Africa App and other logistics

- **Endline survey preparations**

October 2022



Regreening Africa

Thank You! Merci! Asante!

Visit our website: www.regreeningafrica.org

Drop us an email: regreeningafrica@cgiar.org

Like our Facebook page: [Regreening Africa](#)

Follow us on Twitter: [@RegreenAfrica](#)

