

# ACCELERATING LAND RESTORATION WITH TREE BUSINESS AS A REGREENING OPTIONS IN KENYA



## INTRODUCTION

To help restore degraded lands, curb rural unemployment, effects of seasonal crop failures and expand available food and income sources, Regreening Africa project integrates value chain development with other project interventions. Communities prefer interventions that offer multiple benefits both environmentally and economically.

Participatory selection of tree-based value chain options have contributed to better appreciation of growing high value trees, Farmer Managed Natural Regeneration (FMNR) and beekeeping across project sites in Kenya.

## REGREENING APPROACH

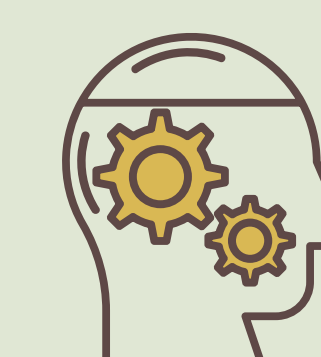


### Selection of priority value chains

Stakeholder consultation and prioritization of beekeeping, moringa, mango and avocado as the viable value chains for development by the project.



## THE PROJECT DEVELOPED THE VALUE CHAINS THROUGH



### Capacity building

The project used Training of Trainers approach to bridge the knowledge gaps on business skills and enterprise development on the selected value chains. Needs assessment was conducted to determine gaps and tailored trainings organized. Exchange visits and experiential learning complemented the training to spur mindset change through learning from likeminded farmers. The training of trainers leveraged on the community meetings to disseminate the skills. The various trainings and its impacts are presented on the right.



# ACCELERATING LAND RESTORATION WITH TREE BUSINESS AS A REGREENING OPTIONS IN KENYA



## CAPACITY DEVELOPMENT ON PRIORITY VALUE CHAINS IN KENYA

2019

### Value chain development concepts

50 beneficiaries



- Value chain actors organized into producer groups.
- Beekeepers linked to PARECMA enterprises.
- Avocado value chain actors linked to Habex agro limited that contracted farmers on avocado tree growing.
- Project supported mother blocks establishment for Mango and Avocado.

2020

### Exchange visit to mango production sites in Elgeyo Marakwet and bee production sites

30 beneficiaries



- Farmers learnt from experienced farmers on grafting and topworking skills. Some ToTs used the knowledge gained to earn income through grafting seedlings at KS 50 per seedling.
- Project supported mother blocks establishment for Mango and Avocado.
- Beekeepers visited honey processing center, apiaries and hive making workshops. The skills enabled the farmers to increase forage trees on farms.

### Product aggregation and marketing

128 (50F;78M) beneficiaries



- Formation of village level mango and honey production groups to allow product aggregation.
- Linkage of the groups to county department of agriculture, livestock, and food authority.
- Support with marketing skills such as use of WhatsApp.

2021

### Avocado agronomic practises and beekeeping

38 groups (beneficiaries)



- Increased quantity and improved quality of avocado seedlings harvested in March-May 2021.
- Volume of honey and quality during processing improved.
- Increased sales from the products.

### Refresher trainings to existing groups

40 groups



- 40 groups Business management skills, record keeping, marketing strategies skills improved.

### Expansion of mother blocks

30 groups



- 6 fruit tree mother blocks consisting of 540 seedlings of 8 fruit varieties (tommy, apple and van dyke, Genoa, Lisbon, Washington navel, red caracara, sweet and empress grapefruit) from 5 species (mango, lemon, orange, grapefruit, and mandarin) established.

2022

### Establishment of avocado model sites

20 groups (beneficiaries)



- 10 model sites with 100 avocado tree each established

### Honey value chain development

20 groups (beneficiaries)



- Trained on apiary establishment, colony management, harvesting of hive products and marketing





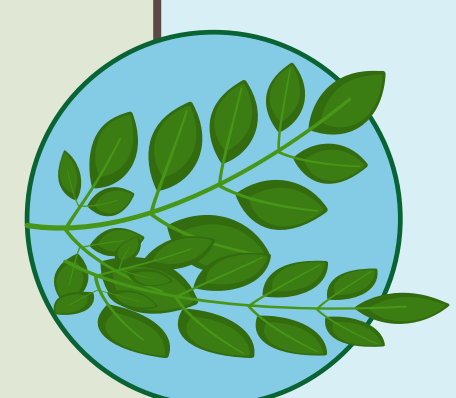
# ACCELERATING LAND RESTORATION WITH TREE BUSINESS AS A REGREENING OPTIONS IN KENYA



## CONTRACT FARMING



**Avocado farmers** engaged on contract farming by the Habex Agro Limited that support with quality seedlings, agronomic practises, harvesting and marketing of the products. So far, the farmers are exporting fruits to Europe through the private firm. Through the partnership, 2,300 small scale farmers covering about 1,150 acres of degraded land with a total of 92,000 avocado fruit trees have been grown generating annual production of 100,000 kilos of avocado fruits an an annual income of \$50,000 for the farmers. Avocado growing under these agroforestry plans involves intercropping with other tree and crop enterprises such as.....to promote soil and water conservation



**Moringa** value chain actors are also linked to a private company that is interested in engaging them on contract farming for production of different product lines that include seed, tender leaves and mature leaves to address various market needs.



## BEE KEEPING AND HONEY VALUE CHAINS

### Construction of beehives

To address the challenge relating to high cost of purchase of modern hive, the project trained 11 artisans included one officer from the Kenya prison on how to construct modern hive using trees harvested sustainably from farms. Grevilia, eucalyptus and pine are among the trees used in construction of hives. To support scaling of the technologies, a group from Migori, Homabay and Kenya prison received a completed hive.

### Provision of easy-to-use knowledge products

The project produced an easy to use, step by step tool to support development of value chains.



### Key achievements

- **Expansion of FMNR plots** with increase tree diversity to meet the forage needs for farmers.
- **Increased growing of diverse tree species** on farm to address seasonality of harvested products.
- **Ownership of technologies** by farmers ensuring sustainability and widespread adoption.
- **Increased volumes, quality and income** earned by beekeepers.
- **Avocado products reaching both international and local markets** earning income for farmers resulting to improved livelihoods.



### Lessons learnt

- **Integrating income generating activities** with land restoration options can promote adoption
- **Community led options** are more easily owned, sustained and scaled
- **Linkages with key actors in the value chain** is a good strategy value chain upgrading