



Regreening Africa

Regreening Africa overview

Ethiopia SHARED Workshop 4th – 5th October

Mieke Bourne Ochieng – Programme Manager

(with inputs from the Regreening Africa Team)



Land degradation is affecting
3.2 billion people globally

(IPBES, 2018)

**Africa
context**



Over **65%** of
Africa's agricultural
land is degraded



Photo credit: Joachim Vagen



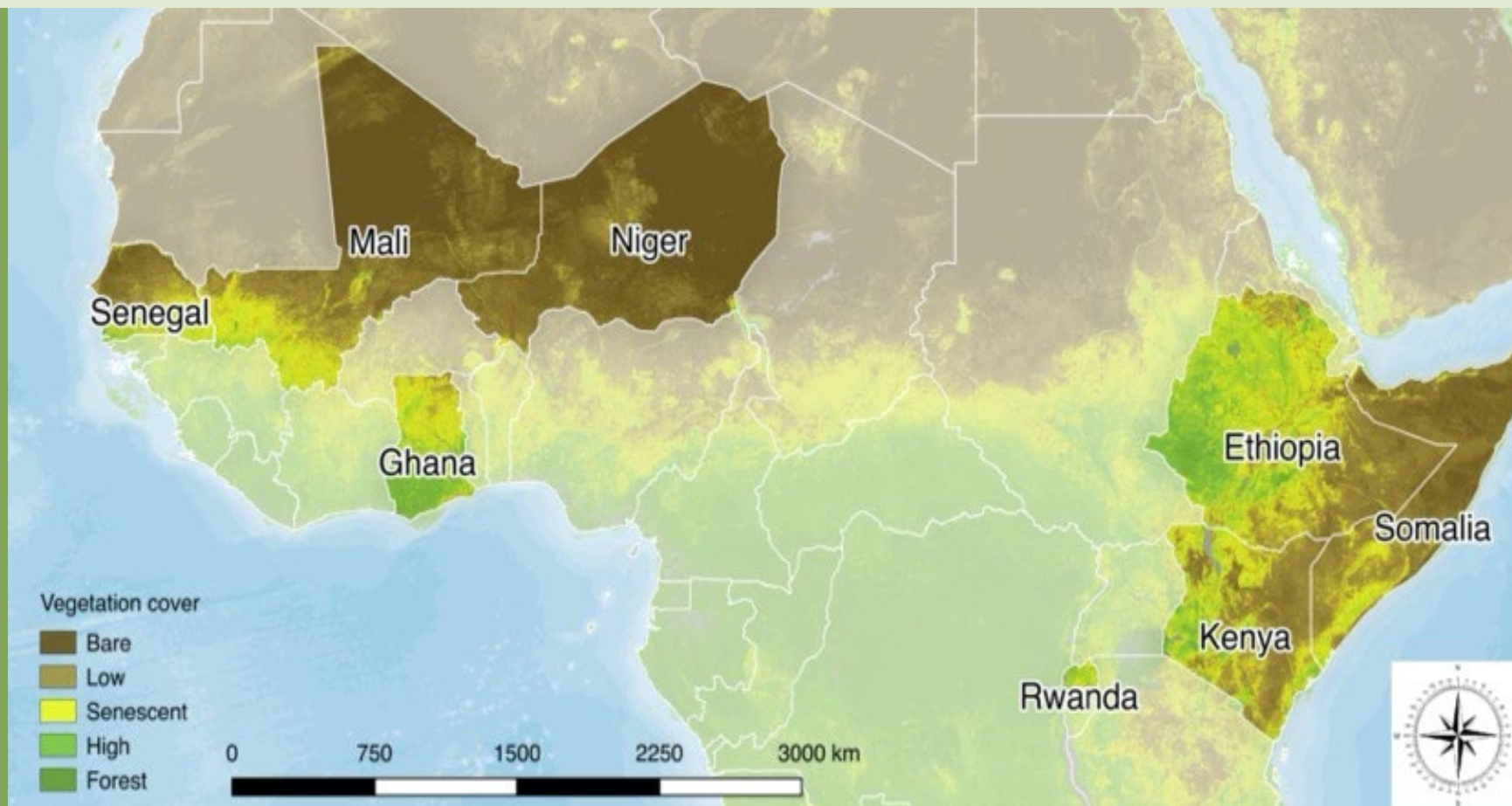
Regreening Africa (2017-2023)



*500,000 households,
across 1 million hectares*



*Incorporating trees into
croplands, communal
lands and pastoral
areas with S&W
conservation and other
practices*

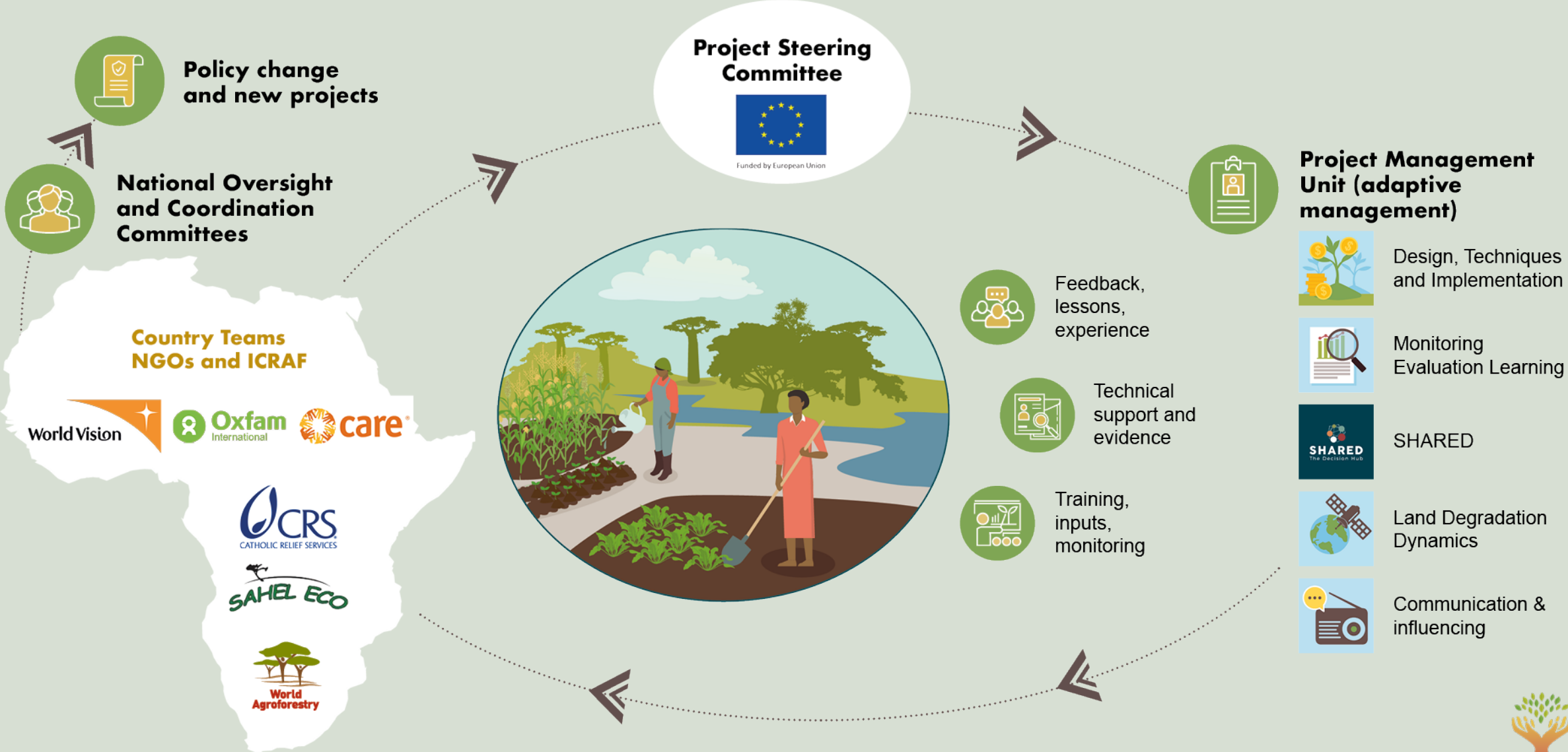


Funded by European Union



Regreening Africa

A unique programme structure



Achievement on targets by September 2021



500,000

HHs: target

401,297

HHs: reached to date

127,073

HHs: verified (uptake surveys)



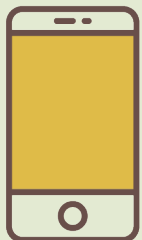
1,000,000 **Ha:** target

665,924

Ha: reached to date

311,199

Ha: verified (uptake surveys + App)



399,040 hectares

157,250 households

Captured with the Regreening App by October 2022



Lesson 1

Practices are varied
and must match
present and future
local contexts

Nurseries (including indigenous trees)





Tree growing + grafting +
direct seeding

FMNR, ANR + (big return on investment)



Ethiopia: exclosures +



Niger: soil & water conservation +



A woman wearing a red shirt and a checkered apron is holding a young tree sapling in a nursery setting. She is looking towards the left of the frame. The background is filled with lush green trees and foliage. The text "Lesson 2" is overlaid on the left side of the image.

Lesson 2

Address drivers of
degradation and
incentives for
restoration



Addressing drivers of degradation and creating an enabling environment, grazing management

Equitable value chains and livelihoods





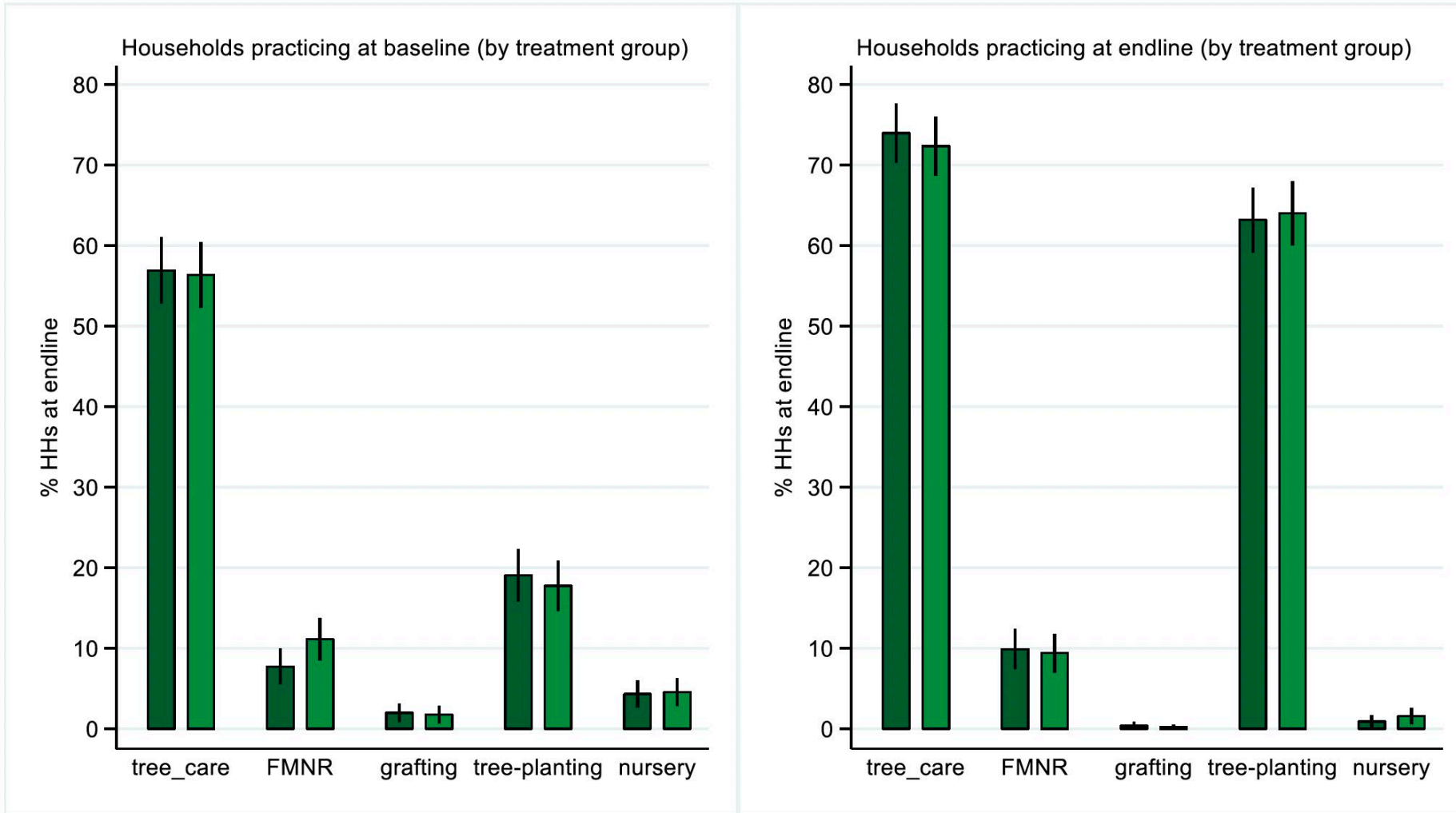
Lesson 3

Bringing science,
evidence and monitoring
to the global and local
restoration
agenda accelerates
impact on the ground



Practice of regreening initiatives at baseline by treatment group

Households practicing different regreening activities at baseline



Year 4 (N=557)
 Year 1 (N=575)

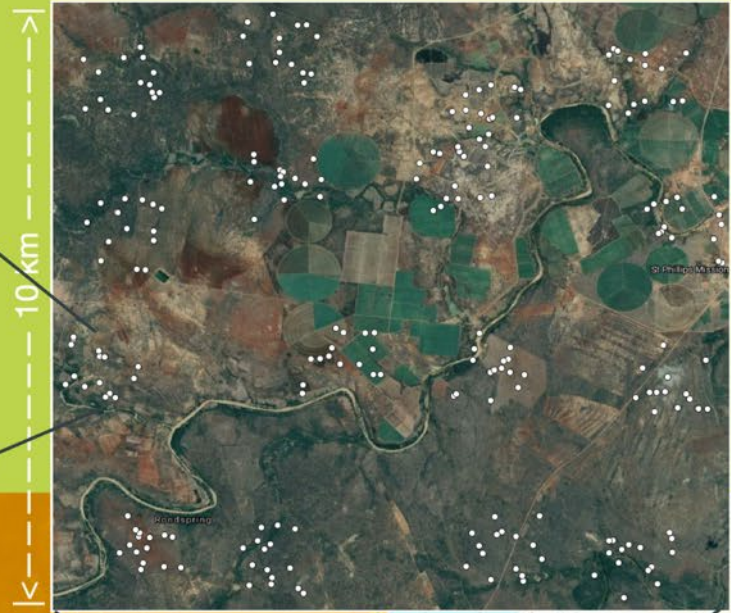
Tree planting increased significantly between baseline and endline

 Slightly higher among households in treatment sites

 FMNR practice barely changed
 Less tree grafting and involvement in nursery at endline

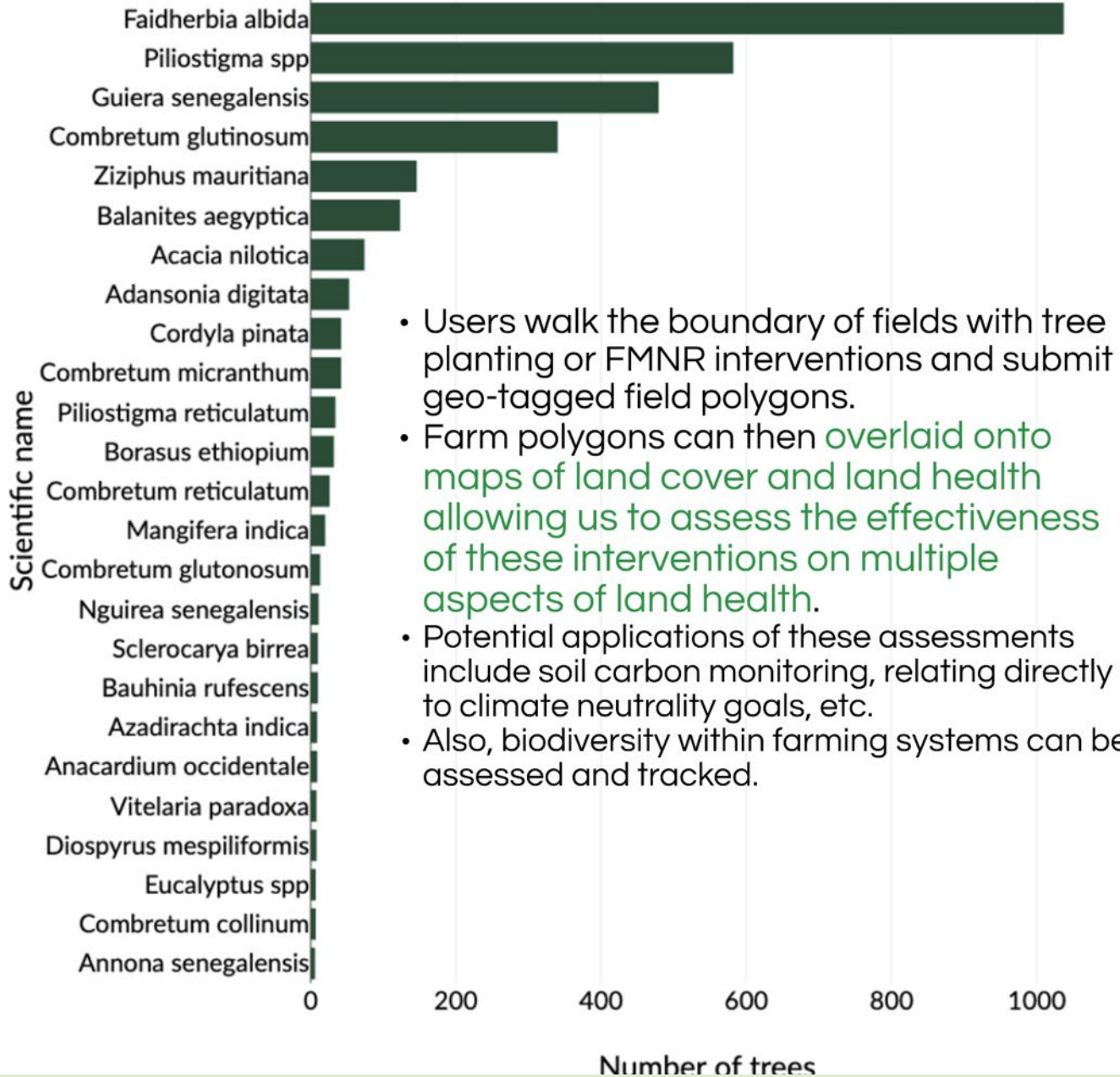


**Land Degradation
Surveillance
Framework (LDSF)**
Land health data
and at high
accuracy

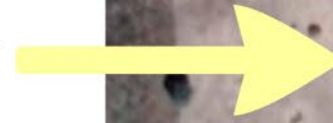




FMNR - species



- Users walk the boundary of fields with tree planting or FMNR interventions and submit geo-tagged field polygons.
- Farm polygons can then **overlaid onto maps of land cover and land health** allowing us to assess the effectiveness of these interventions on multiple aspects of land health.
- Potential applications of these assessments include soil carbon monitoring, relating directly to climate neutrality goals, etc.
- Also, biodiversity within farming systems can be assessed and tracked.





Home

Explore data

Dashboard/Regreening Africa

Select Project

View Rep

TOTAL **HH**
157250
 ▲ Total farmer/group /institution surveyed

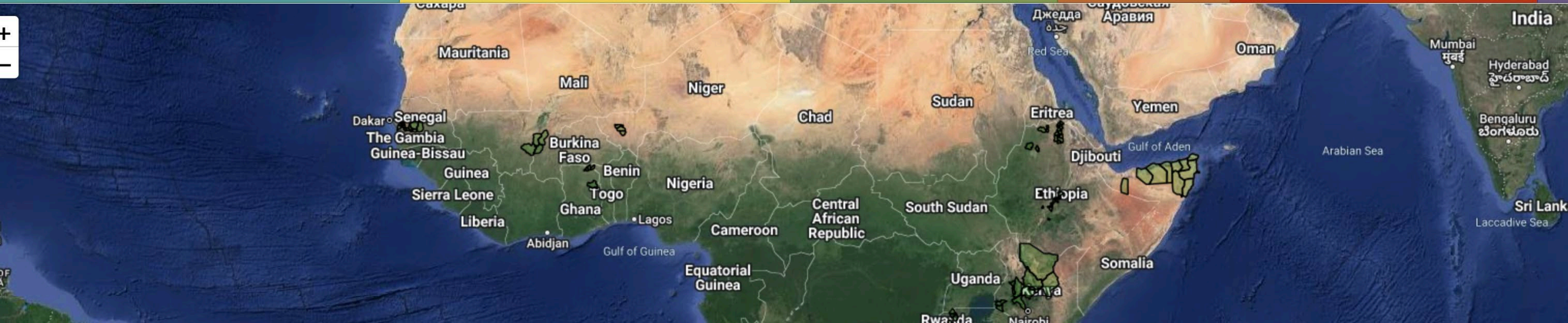
TOTAL **FMNR** plots
75765
 ▲ Total FMNR plots surveyed

TOTAL **TP** plots
80332
 ▲ Tree planting plots surveyed

TOTAL **Trees**
227840
 ▲ Individual trees surveyed

TOTAL **Nurseries**
801
 ▲ No. of nurseries recorded

TOTAL **Area**(ha)
399040
 ▲ Total area under restoration





Home

Explore data

Dashboard/Regreening Africa/Ethiopia

Select Project

Ethiopia

View Data Reports

TOTAL HH

8252

Total farmer/group /institution surveyed

TOTAL FMNR plots

1722

Total FMNR plots surveyed

TOTAL TP plots

6500

Tree planting plots surveyed

TOTAL Trees

9637

Individual trees surveyed

TOTAL Nurseries

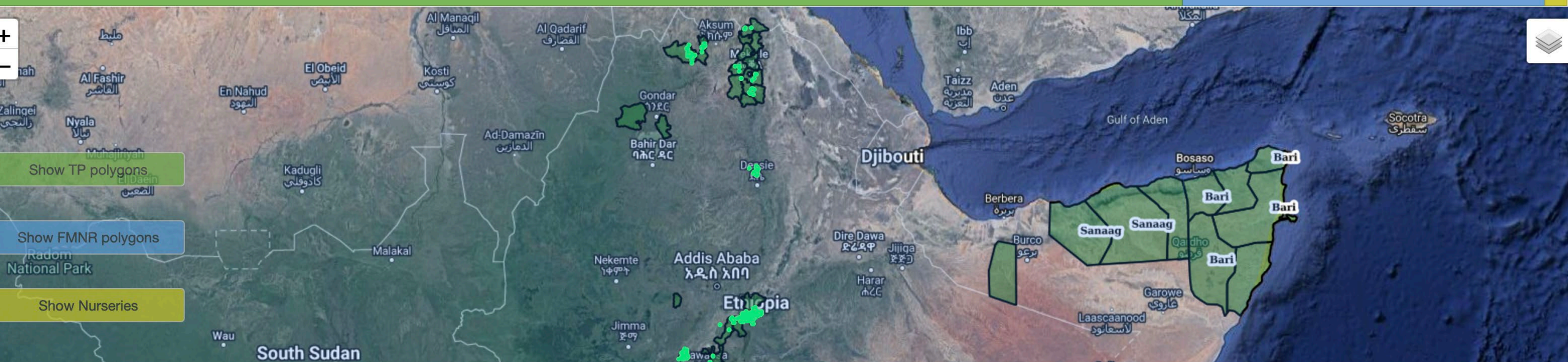
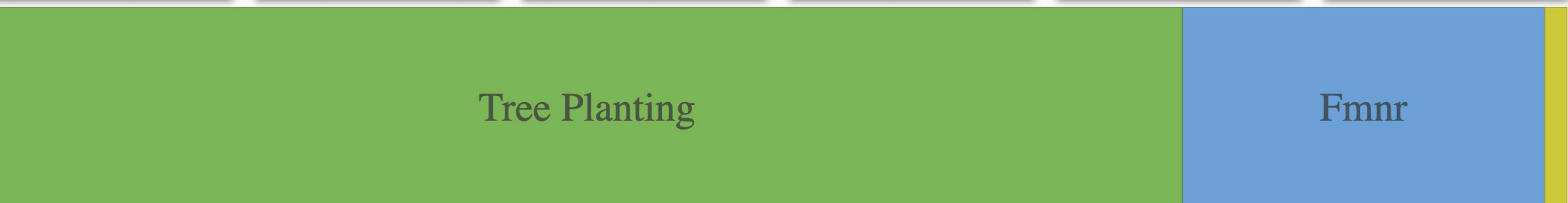
68

No. of nurseries recorded

TOTAL Area(ha)

100853

Total area under restoration





About Regreening Africa

About this dashboard

About the Regreening App

Explore country data

Rwanda

Ghana

Senegal

Kenya

Ethiopia



Ethiopia



Select the project area you would like to explore!

All

Switch language

English

When you select a project area from the dropdown list above, a heatmap will also be shown on the map. This shows where the Regreening Africa App is being used to track tree planting activities. Also, other graphics on this page will update to reflect the area selected (if data is available for this area).

Highlights

Results of Monitoring and Evaluation (MEL) surveys

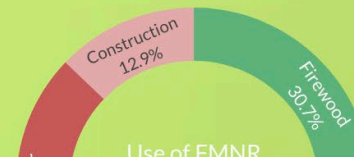
Regreening Africa App

Soil and land health

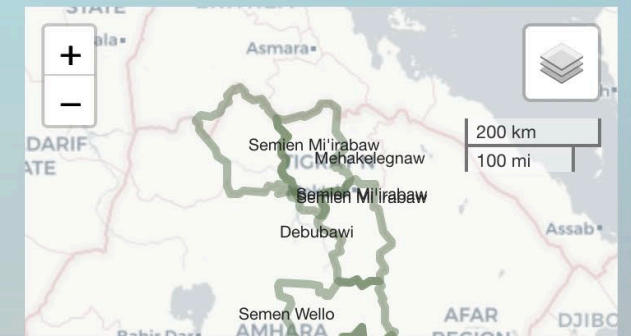
Location of trees planted

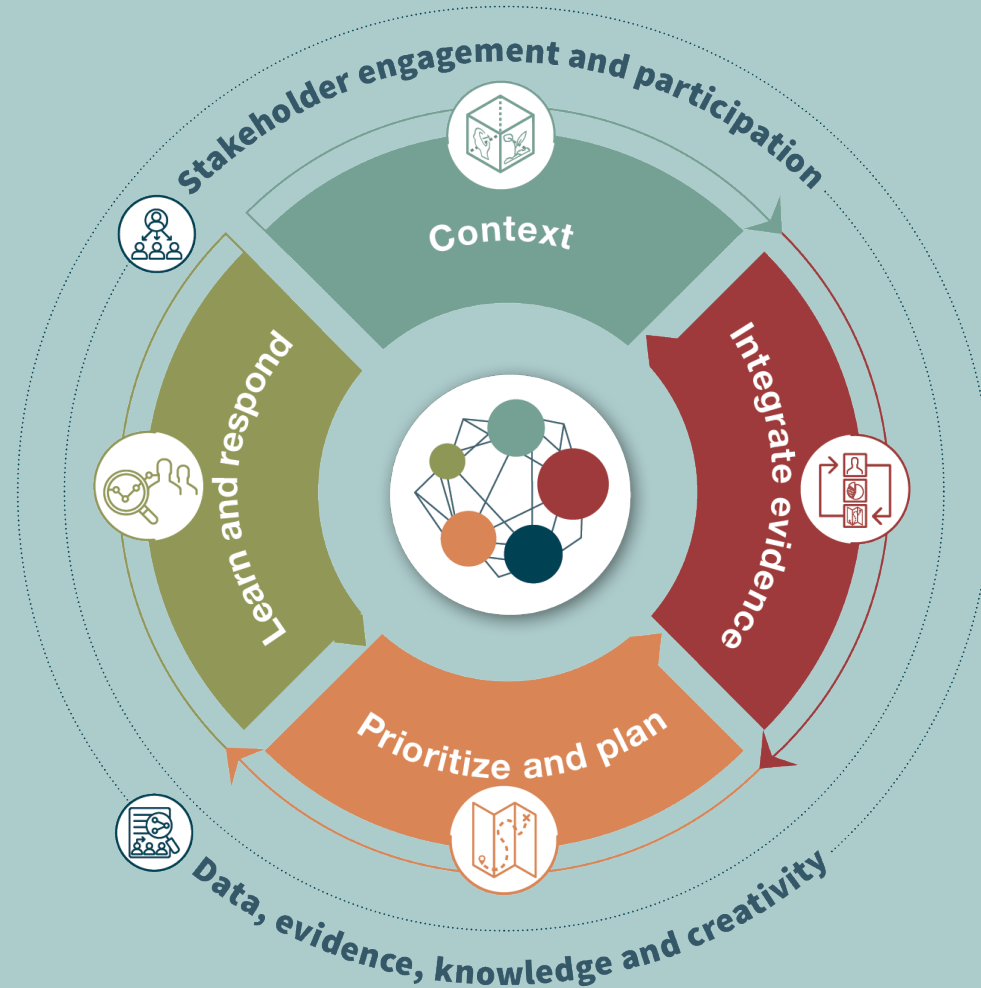


Use of trees protected by farmers



Map with project areas/districts highlighted

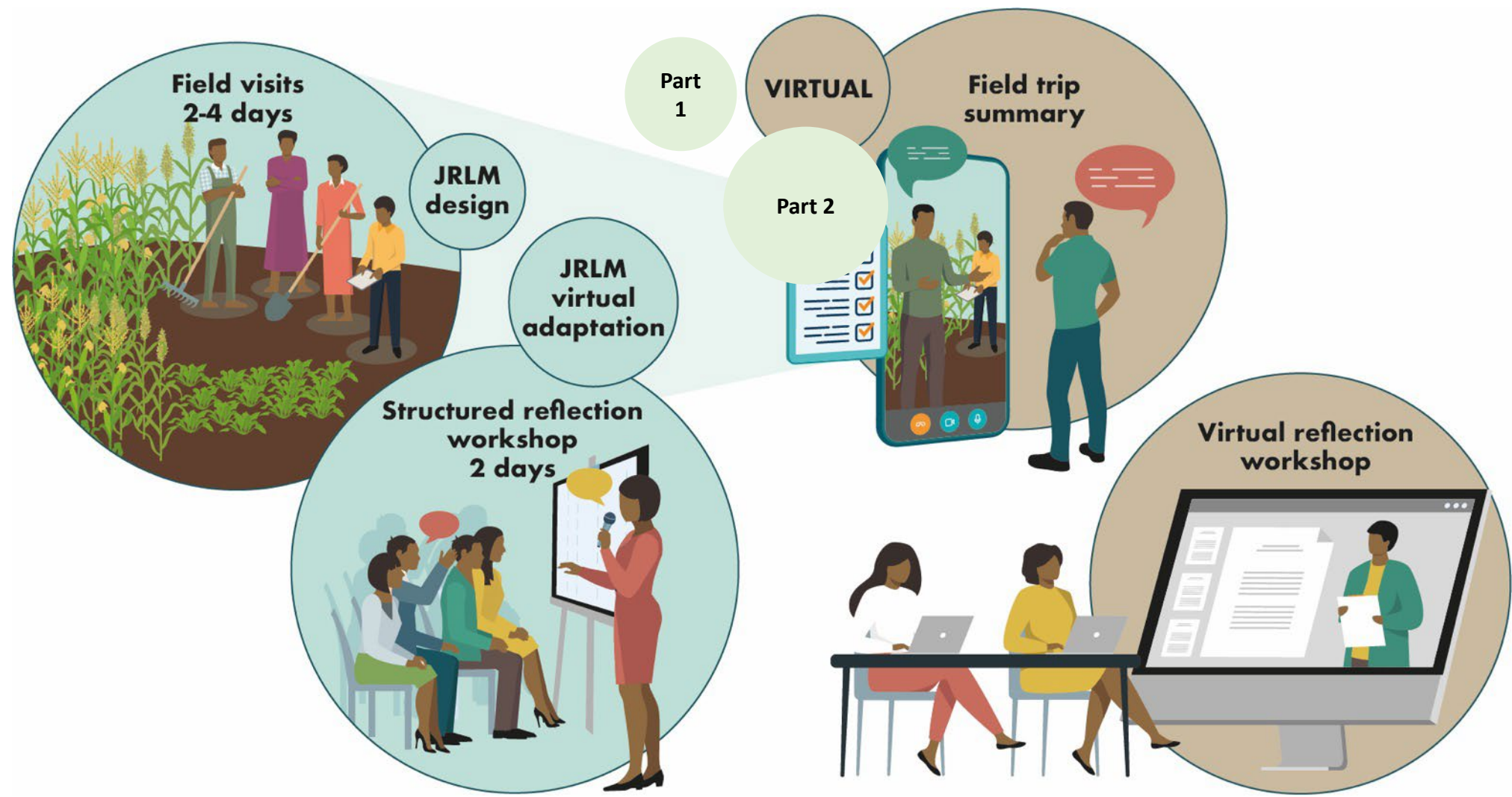




Lesson 4

Data should be accessible and available for adaptive management

Joint Reflective Learning Missions: Integrating evidence, supporting adaptive management





Lesson 5 Partnerships and inclusion



Strong partnerships between government, community, development actors, research and donors are critical and must be nurtured.



Including and empowering youth and women



2019 — 2020

Design integrated approaches that incentivize farmers
Who: MoALR, smallholder farmers, policy makers, through the Agroforestry Platform, scientific community, international think tank group

Policies and strategies scanned and then strengthened or new ones develop to fill gaps

Review and strengthen the existing agroforestry draft strategy

Strengthen the Agroforestry Platform
Who: Government bodies and ministries from different levels, MoALR, NGOs, development agencies, Agroforestry Platform, ICRAF

Develop a mechanism to link agroforestry extension and research
Who: MoALR and MEFCC with national council for linkages

Dedicated staff and capacity for those staff for monitoring

Develop policies and procedures for the monitoring themes with dedicated resources

Define a monitoring and evaluation working group and a protocol for information dissemination

Identify tools of information dissemination by the project team

Coordinate between upper and lower catchment
Who: Farmers, NGO, Government

Characterise the existing grazing system and if best practices exist then document and synthesize them. Led by MoALR and NGOs

Awareness creation led by Government, CSOs, NGOs

Policy advocacy on land use and agroforestry 2019-2020 led by MoALR, NGOs, Universities and research

Pilot new farm enclosures on model farms led by MoALR and NGOs

Gather best practices led by MoALR and research
Train farmers to produce quality seeds so they can sell and raise trees for seed purpose

Who: Government, NGOs, farmer associations, seed enterprise, research and universities can give some training based on the research outputs

Develop an agroforestry policy
Influence the Agroforestry Task Force and boost the Agroforestry Think Tank to: contextualize local plans; embed in all agricultural efforts; focus on common pool resources; effective, ambitious outreach; markets and infrastructure

Farmer driven advocacy for agroforestry policy and strategy

Start the Evergreening Academy. Define a specific mandate within agroforestry and assign appropriately to MoALR and MEFCC

Establish a learning forum with deliberate learning by the project management team
Use of technology such as dashboards and tablets

Redistribute mountain areas for individuals and youth groups and consider areas for non-business investment
After 2022 - Diversification and intensification of hillside / mountain activities
Who: Farmers, NGO, Government, Universities and research institutions, private companies

Fodder trees, germplasm distribution, access to alternative feed supply led by MoALR, NGOs, Universities and research

Scaling-up of learnings led by MoALR, NGOs

By-law development led by MoALR and local administration

2021 — 2022

Capture lessons and develop policy briefs
Who: MoALR, NGOs, researchers

Create market linkages and selection of seed led by NGOs and Government
Farmers producing and collecting seed

2022

Strengthen market and linkages

The Agroforestry Platform has been established to accelerate the scaling up of the adoption of agroforestry through technical capacity development, and coordination across sectors, public and private actors.

Key:

Agroforestry Strategy and Policy

Farm Enclosures: On farm sustainable grazing systems

Monitoring and learning

Agroforestry products and value chains- seed supply and markets

Agroforestry Platform - Coordination and leveraging for scaling up in Ethiopia

Hillside/Mountain Enclosures: sustainable management and utilization in watersheds

Capacity of agricultural innovation systems: research, development and extension

Acronym glossary:

CBOs Community Based Organizations
CSOs Civil society organizations
FBOs Faith Based Organizations

ICRAF World Agroforestry Centre
IGOs Intergovernmental Organizations
MEFCC Ministry of Environment, Forest & Climate Change

MoALR Ministry of Agriculture & Livestock Resource
NGO Non-governmental organizations

SHARED workshop in late 2018 at the start of the project

Summary

Lessons from Regreening Africa

1. Match practices to context
2. Drivers and incentives
3. Monitor
4. Data based decisions and adaptation
5. Partnerships and inclusion

We are building on the work from the past 5 years (and more)





Thank You! Merci! Asante!

Visit our website: www.regreeningafrica.org

Drop us an email: regreeningafrica@cgiar.org

Like our Facebook page: [Regreening Africa](#)

Follow us on Twitter: [@RegreenAfrica](#)

